

Fitzroy Primary School (450)

2008 School Level Report

Please check the data in this report. If, after comparing it with your own records, you deem it to be incorrect or incomplete, follow the directions on the following website:

- <http://www.education.vic.gov.au/management/schoolimprovement/performancecd/>
then select 'School Performance Reports'.
-
-

Contents

	Page No.
Privacy	3
SFO Density and LBOTE	4
Assessment of Reading Prep to Year 2	5-6
Teacher Judgments against the VELs	7-15
NAPLAN - Reading	16
- Writing	17
- Numeracy	18
AIM - Reading	19
- Mathematics	20
Teacher Assessment of Student Progress (PSD students)	21-22
Enrolment	23
Student Absence	24
Opinion Surveys - Parent	25
- Staff	26
Performance & Development Culture	27
Staff Sick Leave	28
Teaching Staff Retention	29
Bank Balances	30

Privacy

When reporting on the school's performance to the school community, care must be taken to avoid the disclosure of information that can directly or indirectly identify an individual. This may be a particular issue when reporting on the achievement of specific cohorts of students or the opinions of staff where there are small numbers.

In situations where privacy cannot be assured, schools may wish to report on the mean result or provide a written comment on school, year level or cohort performance.

Where the School Level Report is provided to school council members as part of any annual reporting process, or used for discussion on a school's performance, such as in consultation with the school community in the school self-evaluation process, it is important to remind school community members of their duty to only use this information for the purpose it was provided, and that the material must be kept confidential.

It is important to note that information that identifies an individual or can be used with other readily available information to identify a person is now protected by the *Information Privacy Act 2000* (<http://www.education.vic.gov.au/about/deptpolicies/informationprivacy.htm>).

SFO Density and LBOTE

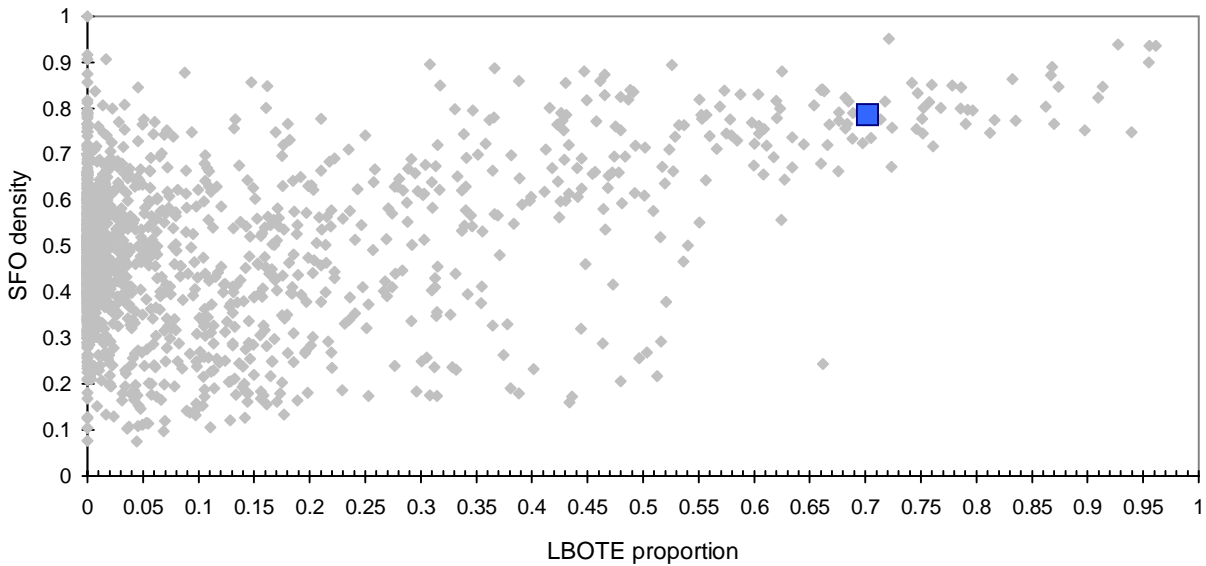
School no: 450

School name: Fitzroy Primary School

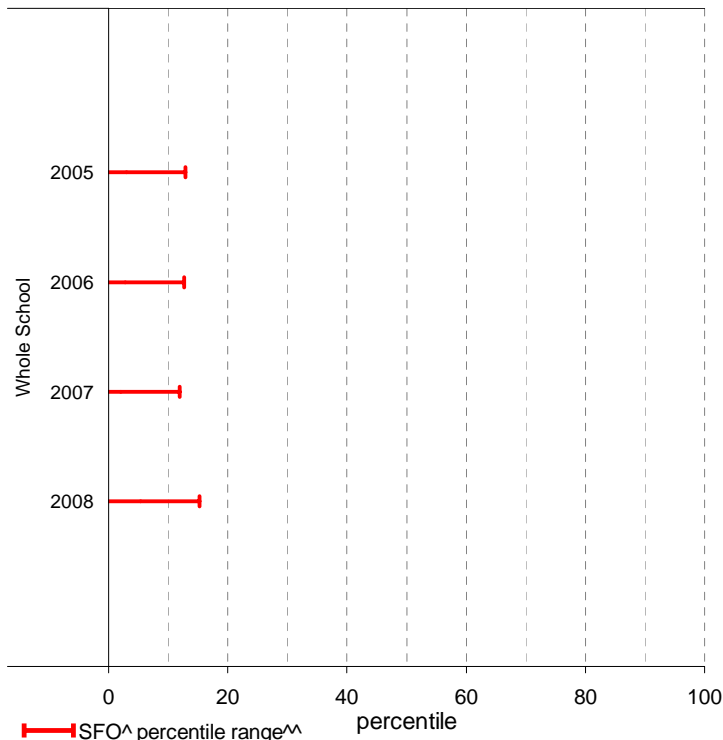
Explanation: The chart below plots the school's 2008 SFO (Student Family Occupation) density[^] and LBOTE (Language Background Other Than English) proportion* against that of all government schools. This school is highlighted as a square on the chart.

	2001	2002	2003	2004	2005	2006	2007	2008
SFO density [^] :					0.81	0.80	0.84	0.79
LBOTE proportion*:	0.64	0.63	0.61	0.65	0.72	0.74	0.76	0.70

School's 2008 SFO density and LBOTE proportion against that of all government schools



School's SFO[^] percentile range^{^^} over time



Notes: [^] The higher the SFO density, the lower the SFO percentile and the lower the socio-economic status (SES).

^{^^} The school's SFO percentile range shows the 20% of schools with an SFO Density most like this school.

* From 2007, a student is LBOTE if either the student or one parent/guardian speaks a language other than English at home. Prior to 2007, a student is LBOTE if the student or one of the parents was born in a non-English speaking country.

Assessment of Reading: Prep to Year 2

School no: 450

School name: Fitzroy Primary School

Explanation: Students' ability to read unsighted text is assessed at the end of each year. The data presented here includes 'deemed not capable' students.

More detailed information (including data where deemed not capable students are excluded) is available in the Assessment of Reading report, available from the School Performance Reports website.

Source of data: Data transmitted from school to DEECD via an online web-form.

	Prep										Year 1										Year 2												
	School									State	School									State	School									State			
	2004		2005		2006		2007		2008		2008	2004		2005		2006		2007		2008		2008	2004		2005		2006		2007		2008		2008
	(No.)	%	(No.)	%	(No.)	%	(No.)	%	(No.)	%	%	(No.)	%	(No.)	%	(No.)	%	(No.)	%	(No.)	%	%	(No.)	%	(No.)	%	(No.)	%	(No.)	%	%		
Level 1																																	
100%	(6)	46.2	(4)	20.0	(8)	33.3	(10)	47.6	(10)	40.0	69.0	(14)	82.4	(14)	100.0	(19)	86.4	(15)	78.9	(19)	79.2	94.7											
90-99%	(3)	23.1	(9)	45.0	(9)	37.5	(9)	42.9	(11)	44.0	25.4	(3)	17.6			(3)	13.6	(4)	21.1	(5)	20.8	4.7											
80-89%	(1)	7.7	(2)	10.0			(1)	4.8	(1)	4.0	2.3											0.2											
51-79%			(2)	10.0	(4)	16.7	(1)	4.8			1.5											0.2											
50% or below	(3)	23.1	(3)	15.0	(3)	12.5			(3)	12.0	1.7											0.3											
Total	(13)	100.0	(20)	100.0	(24)	100.0	(21)	100.0	(25)	100.0	100.0	(17)	100.0	(14)	100.0	(22)	100.0	(19)	100.0	(24)	100.0	100.0											
Subtotal 90-100%	(9)	69.2	(13)	65.0	(17)	70.8	(19)	90.5	(21)	84.0	94.5	(17)	100.0	(14)	100.0	(22)	100.0	(19)	100.0	(24)	100.0	99.4											
Level 5																																	
100%	(1)	7.7	(3)	15.0	(6)	25.0	(4)	19.0	(6)	24.0	45.3	(12)	70.6	(10)	71.4	(18)	81.8	(10)	52.6	(20)	83.3	81.0	(16)	100.0	(14)	100.0	(11)	64.7	(15)	78.9	(9)	45.0	90.4
90-99%	(3)	23.1	(4)	20.0	(5)	20.8	(14)	66.7	(11)	44.0	36.1	(4)	23.5	(4)	28.6	(3)	13.6	(8)	42.1	(3)	12.5	16.9				(6)	35.3	(4)	21.1	(9)	45.0	8.8	
80-89%	(4)	30.8	(1)	5.0	(1)	4.2	(1)	4.8	(2)	8.0	5.2	(1)	5.9									0.8											
51-79%	(1)	7.7	(2)	10.0			(1)	4.0	(1)	4.0	3.6											0.4							(1)	5.0	0.1		
50% or below	(4)	30.8	(10)	50.0	(12)	50.0	(2)	9.5	(5)	20.0	9.8				(1)	4.5	(1)	5.3				1.0							(1)	5.0	0.4		
Total	(13)	100.0	(20)	100.0	(24)	100.0	(21)	100.0	(25)	100.0	100.0	(17)	100.0	(14)	100.0	(22)	100.0	(19)	100.0	(24)	100.0	100.0	(16)	100.0	(14)	100.0	(17)	100.0	(19)	100.0	(20)	100.0	100.0
Subtotal 90-100%	(4)	30.8	(7)	35.0	(11)	45.8	(18)	85.7	(17)	68.0	81.3	(16)	94.1	(14)	100.0	(21)	95.5	(18)	94.7	(23)	95.8	97.9	(16)	100.0	(14)	100.0	(17)	100.0	(19)	100.0	(18)	90.0	99.2
Level 15																																	
100%												(3)	17.6		(2)	9.1	(2)	10.5	(5)	20.8	37.1	(5)	31.2	(2)	14.3	(8)	47.1	(8)	42.1	(4)	20.0	62.9	
90-99%												(9)	52.9	(11)	78.6	(14)	63.6	(12)	63.2	(16)	66.7	49.2	(11)	68.8	(9)	64.3	(7)	41.2	(10)	52.6	(11)	55.0	33.2
80-89%												(1)	5.9	(3)	21.4	(3)	13.6	(1)	5.3	(2)	8.3	6.3			(3)	21.4	(2)	11.8				1.8	
51-79%												(1)	5.9		(2)	9.1	(3)	15.8				3.0						(1)	5.3	(3)	15.0	0.8	
50% or below												(3)	17.6		(1)	4.5	(1)	5.3	(1)	4.2		4.3							(2)	10.0	1.4		
Total												(17)	100.0	(14)	100.0	(22)	100.0	(19)	100.0	(24)	100.0	100.0	(16)	100.0	(14)	100.0	(17)	100.0	(19)	100.0	(20)	100.0	100.0
Subtotal 90-100%												(12)	70.6	(11)	78.6	(16)	72.7	(14)	73.7	(21)	87.5	86.4	(16)	100.0	(11)	78.6	(15)	88.2	(18)	94.7	(15)	75.0	96.1
Level 20																																	
100%																							(5)	31.2	(2)	14.3	(6)	35.3	(3)	15.8	(2)	10.0	47.4
90-99%																							(11)	68.8	(9)	64.3	(7)	41.2	(15)	78.9	(13)	65.0	47.1
80-89%																									(2)	14.3	(1)	5.9					2.4
51-79%																									(1)	7.1							0.9
50% or below																											(3)	17.6	(1)	5.3	(5)	25.0	2.2
Total																							(16)	100.0	(14)	100.0	(17)	100.0	(19)	100.0	(20)	100.0	100.0
Subtotal 90-100%																							(16)	100.0	(11)	78.6	(13)	76.5	(18)	94.7	(15)	75.0	94.5

	2004	2005	2006	2007	2008	2004	2005	2006	2007	2008	2004	2005	2006	2007	2008
No. of students DNC ¹ :	3	6	5	1	3	1	0	1	0	1	0	3	2	0	4
No. of students at risk ² :	4	7	7	2	4	1	0	1	1	1	0	3	2	1	5

Notes:

¹ Students can be DNC (deemed not capable) only if they meet one of the conditions (insufficient English, receiving D&I funding, insufficient attendance at the school or referred from Reading Recovery) AND read below the minimum standard.

² The number of students at risk is the number of students reading at less than 90% accuracy at Level 1 for Prep, Level 5 for Year 1 or Level 15 for Year 2.

Assessment of Reading: Prep to Year 2

School no: 450

School name: Fitzroy Primary School

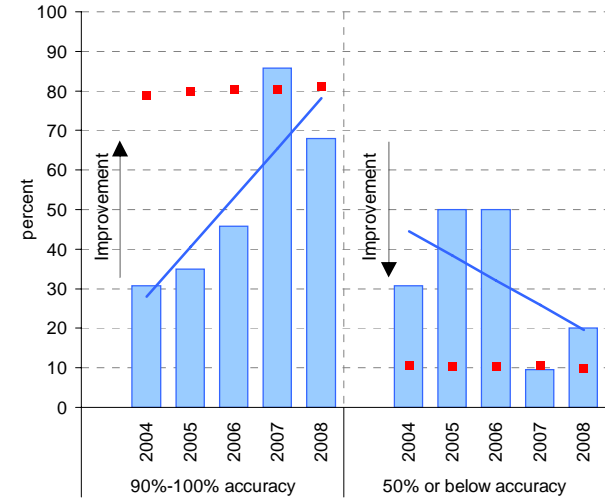
Explanation: Students' ability to read unsighted text is assessed at the end of each year.

Source of data: Data transmitted from school to DEECD via an online web-form.

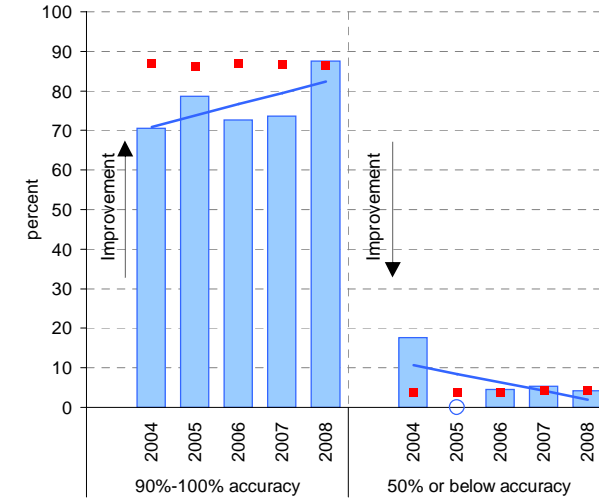
Notes: * The school trendline is being trialled. It is only plotted when there is data for each calendar year.

^ This data is highly skewed, with a lot of schools obtaining the best possible result, particularly in Year 2. The maximum achievable percentile is therefore significantly less than 100.

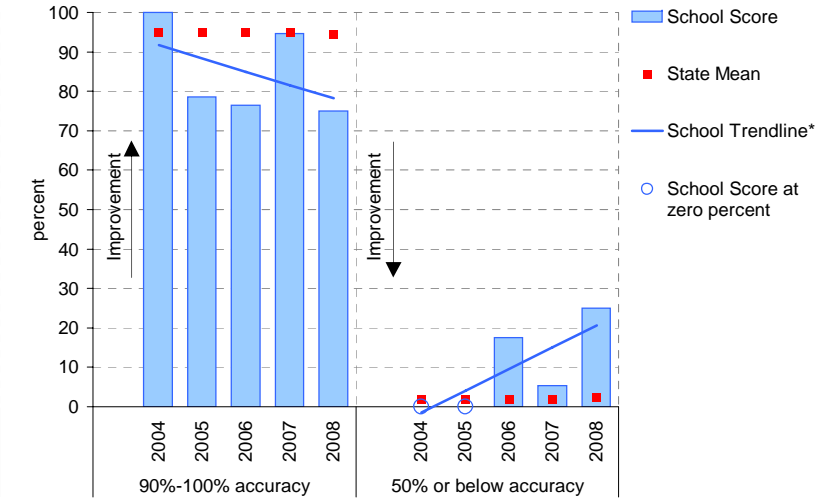
Year level: Prep
Text level: Level 5



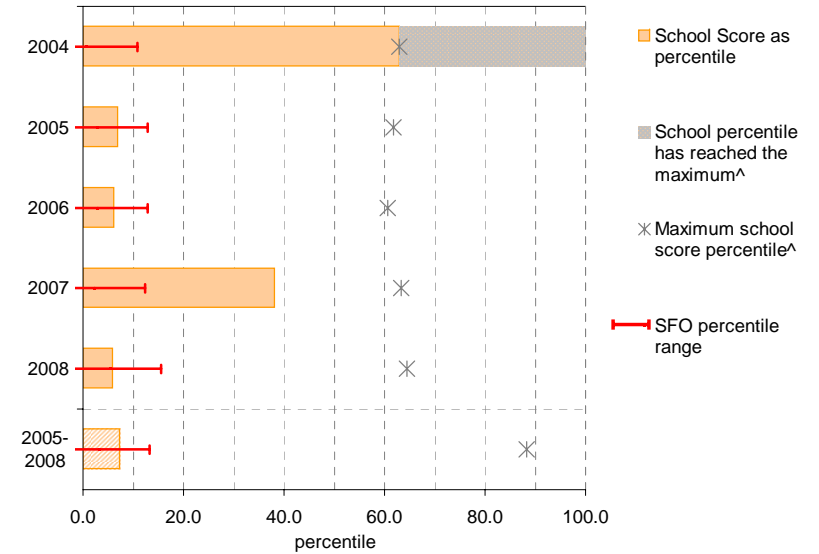
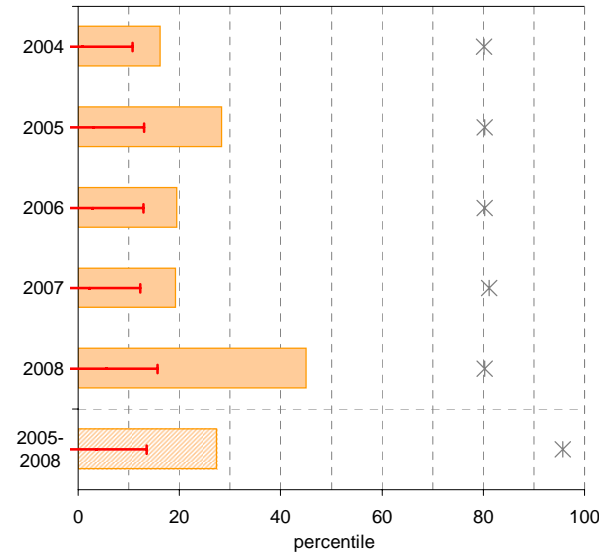
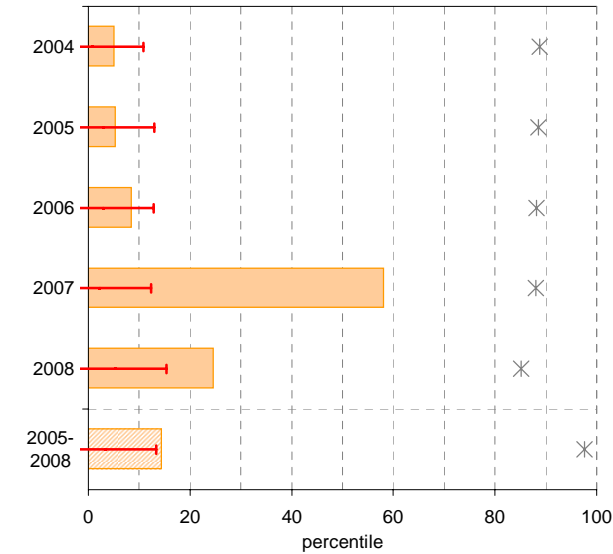
Year level: Year 1
Text level: Level 15



Year level: Year 2
Text level: Level 20



90%-100% accuracy as percentile against SFO percentile range



Teacher Judgments against the VELS - Year levels Prep-6 combined

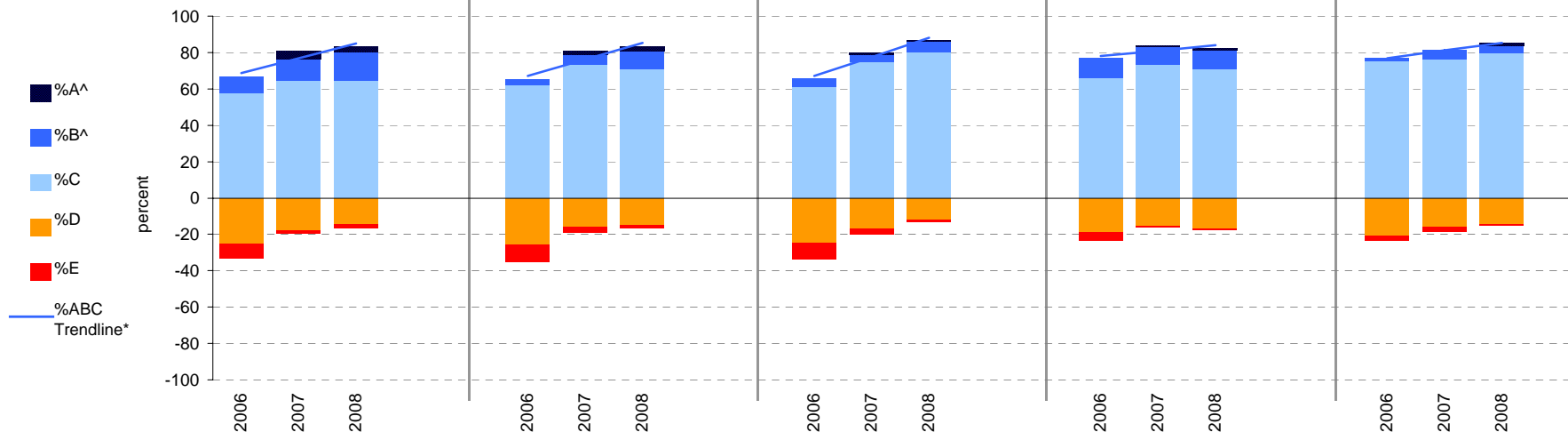
School no: 450

School name: Fitzroy Primary School

Source of data: Data retrieved electronically from CASES21.

Explanation: Teacher judgments of student achievement against the VELS.

Year Levels:	Reading							Writing					Speaking & Listening					Number					Measurement, Chance & Data								
	total students	% A^	% B^	% C	% D	% E	total students	% A^	% B^	% C	% D	% E	total students	% A^	% B^	% C	% D	% E	total students	% A^	% B^	% C	% D	% E	total students	% A^	% B^	% C	% D	% E	
Prep-6 (combined)	2006	129	0	9	57	26	8	129	0	3	62	26	9	129	0	5	61	25	9	129	0	11	66	19	5	129	0	2	75	21	2
	2007	124	4	12	65	18	2	124	2	6	73	16	3	124	1	4	75	17	3	124	1	10	73	15	1	124	0	5	77	16	2
	2008	137	3	16	64	15	2	137	2	10	71	15	1	137	1	6	80	12	1	143	1	10	71	17	1	142	1	4	80	14	1



Notes: * The school trendline is only plotted when there is data for each calendar year.
 ^ The cutoff between grades A and B changed in 2007. Further information is available on the following website:
<http://www.education.vic.gov.au/studentlearning/studentreports/schools/whatsnew.htm>.

Teacher Judgments against the VELS - English (primary)

School no: 450

School name: Fitzroy Primary School

Source of data: Data retrieved electronically from CASES21.

Explanation: Teacher judgments of student achievement against the VELS.

Notes: * The school trendline is only plotted when there is data for each calendar year.

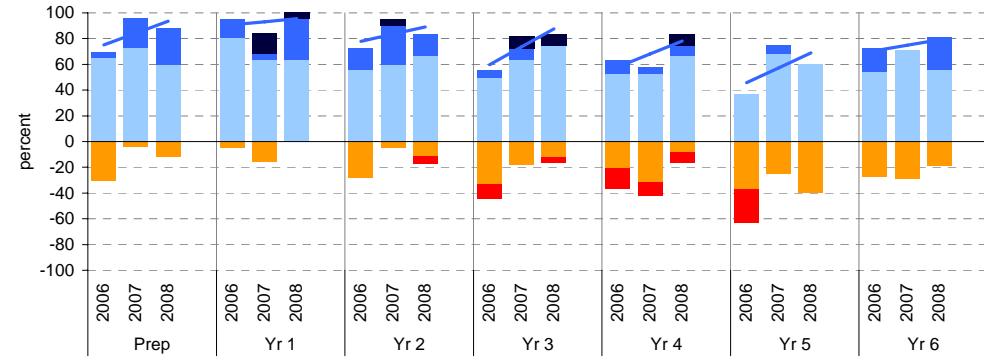
** In 2006, approx. 850 schools assessed their students against the 0.25 VELS scale. 2006 benchmarks are therefore based on a subset of schools.

^ The cutoff between grades A and B changed in 2007. Further information is available on the following website: <http://www.education.vic.gov.au/studentlearning/studentreports/schools/whatsnew.htm>.

^^ 2008 benchmarks and percentiles will be calculated in August, when data from all schools has been submitted.

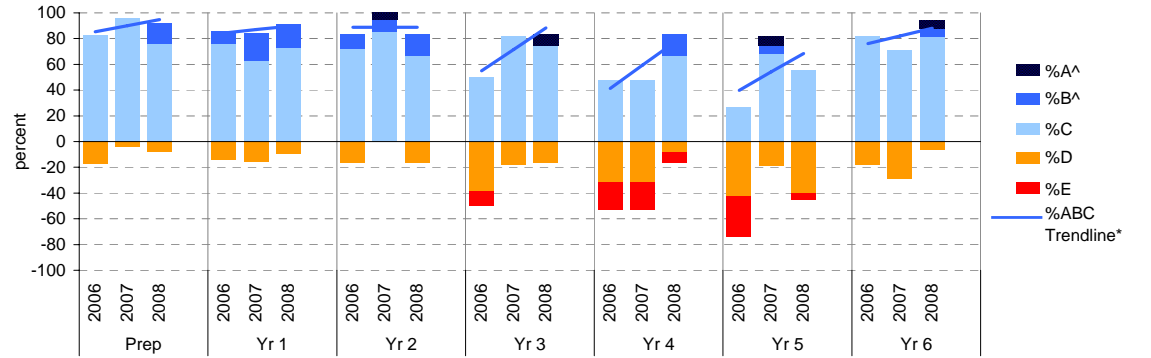
Reading

	total students	% of students by grade					Mean Score			total students	% of students by grade					Mean Score			
		A^	B^	C	D	E	School	State**			A^	B^	C	D	E	School	State**		
Prep	2006	23	0	4	65	30	0	0.58	1.01	Yr 4	2006	19	0	11	53	21	16	2.64	2.96
	2007	22	0	23	73	5	0	0.92	1.01		2007	19	0	5	53	32	11	2.62	2.97
	2008	25	0	28	60	12	0	0.85			2008	12	8	8	67	8	8	2.90	
Yr 1	2006	21	0	14	81	5	0	1.43	1.57	Yr 5	2006	19	0	0	37	37	26	2.93	3.44
	2007	19	16	5	63	16	0	1.42	1.57		2007	16	0	6	69	25	0	3.33	3.45
	2008	22	5	32	64	0	0	1.58			2008	20	0	0	60	40	0	3.21	
Yr 2	2006	18	0	17	56	28	0	1.92	2.04	Yr 6	2006	11	0	18	55	27	0	3.86	3.94
	2007	20	5	30	60	5	0	2.05	2.06		2007	17	0	0	71	29	0	3.74	3.95
	2008	18	0	17	67	11	6	1.92			2008	16	0	25	56	19	0	3.92	
Yr 3	2006	18	0	6	50	33	11	2.19	2.49										
	2007	11	9	9	64	18	0	2.45	2.50										
	2008	24	8	0	75	13	4	2.31											



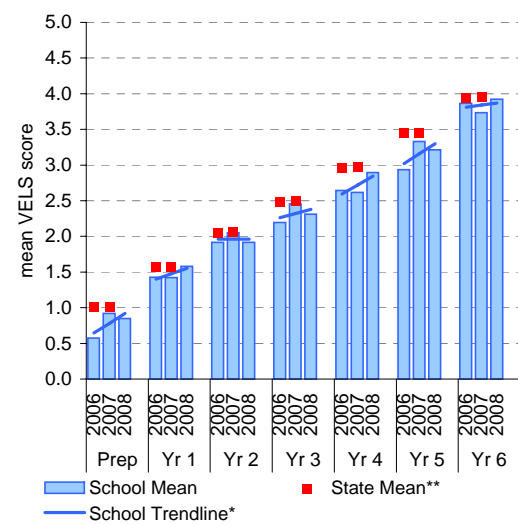
Writing

	total students	% of students by grade					Mean Score			total students	% of students by grade					Mean Score			
		A^	B^	C	D	E	School	State**			A^	B^	C	D	E	School	State**		
Prep	2006	23	0	0	83	17	0	0.67	0.97	Yr 4	2006	19	0	0	47	32	21	2.49	2.89
	2007	22	0	0	95	5	0	0.89	0.97		2007	19	0	0	47	32	21	2.45	2.91
	2008	25	0	16	76	8	0	0.86			2008	12	0	17	67	8	8	2.81	
Yr 1	2006	21	0	10	76	14	0	1.37	1.47	Yr 5	2006	19	0	0	26	42	32	2.87	3.38
	2007	19	0	21	63	16	0	1.36	1.49		2007	16	6	6	69	19	0	3.41	3.39
	2008	22	0	18	73	9	0	1.42			2008	20	0	0	55	40	5	3.16	
Yr 2	2006	18	0	11	72	17	0	1.90	1.95	Yr 6	2006	11	0	0	82	18	0	3.86	3.88
	2007	20	5	10	85	0	0	2.01	1.96		2007	17	0	0	71	29	0	3.75	3.89
	2008	18	0	17	67	17	0	1.89			2008	16	6	6	81	6	0	3.97	
Yr 3	2006	18	0	0	50	39	11	2.13	2.42										
	2007	11	0	0	82	18	0	2.32	2.43										
	2008	24	8	0	75	17	0	2.33											

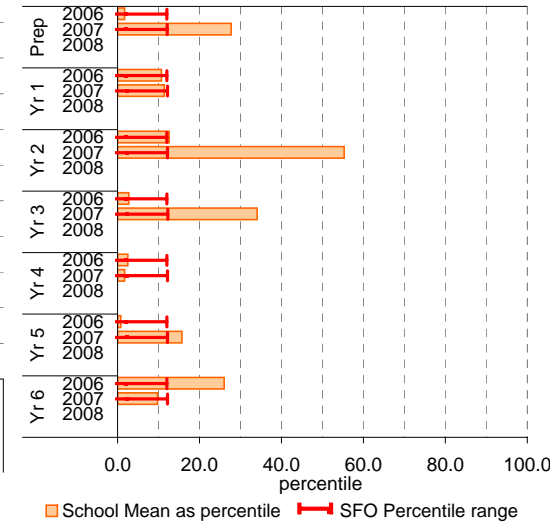


Reading

School Mean against State Mean^^

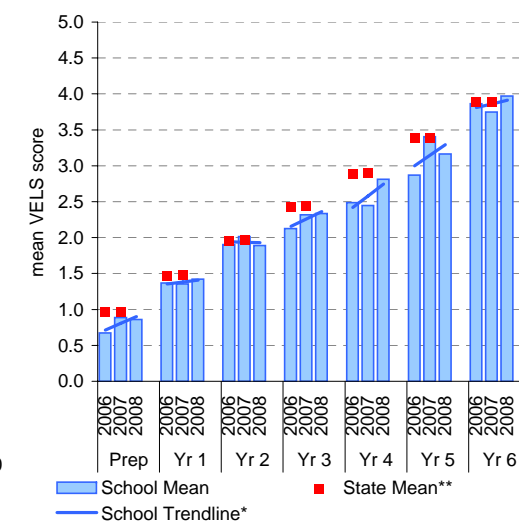


School Mean as percentile against SFO percentile range^^

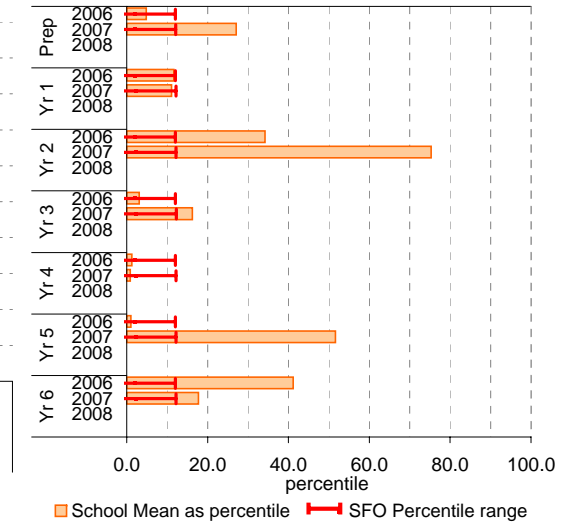


Writing

School Mean against State Mean^^



School Mean as percentile against SFO percentile range^^



Teacher Judgments against the VELS - English (primary)

School no: 450

School name: Fitzroy Primary School

Source of data: Data retrieved electronically from CASES21.

Explanation: Teacher judgments of student achievement against the VELS.

Notes: * The school trendline is only plotted when there is data for each calendar year.

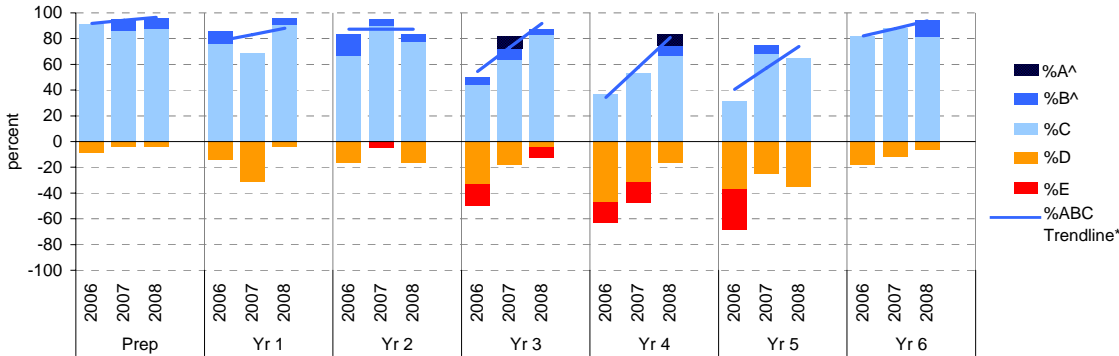
** In 2006, approx. 850 schools assessed their students against the 0.25 VELS scale. 2006 benchmarks are therefore based on a subset of schools.

^ The cutoff between grades A and B changed in 2007. Further information is available on the following website: <http://www.education.vic.gov.au/studentlearning/studentreports/schools/whatsnew.htm>.

^^ 2008 benchmarks and percentiles will be calculated in August, when data from all schools has been submitted.

Speaking and Listening

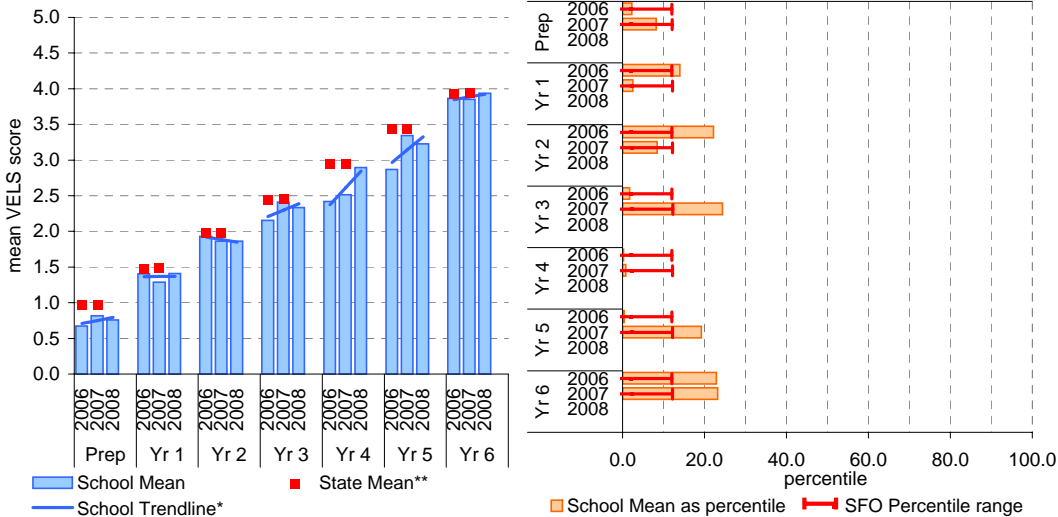
	total students	% of students by grade					Mean Score			total students	% of students by grade					Mean Score				
		A^	B^	C	D	E	School	State**			A^	B^	C	D	E	School	State**			
Prep	2006	23	0	0	91	9	0	0.67	0.97	Yr 4	2006	19	0	0	37	47	16	2.42	2.94	
	2007	22	0	9	86	5	0	0.82	0.97		2007	19	0	0	53	32	16	2.51	2.94	
	2008	25	0	8	88	4	0	0.76			2008	12	8	8	67	17	0	2.90		
Yr 1	2006	21	0	10	76	14	0	1.40	1.48	Yr 5	2006	19	0	0	32	37	32	2.87	3.43	
	2007	19	0	0	68	32	0	1.29	1.48		2007	16	0	0	6	69	25	0	3.34	3.43
	2008	22	0	5	91	5	0	1.41			2008	20	0	0	65	35	0	3.22		
Yr 2	2006	18	0	17	67	17	0	1.93	1.98	Yr 6	2006	11	0	0	82	18	0	3.86	3.93	
	2007	20	0	5	90	0	5	1.86	1.98		2007	17	0	0	88	12	0	3.85	3.94	
	2008	18	0	6	78	17	0	1.86			2008	16	0	13	81	6	0	3.94		
Yr 3	2006	18	0	6	44	33	17	2.15	2.45											
	2007	11	9	9	64	18	0	2.41	2.46											
	2008	24	0	4	83	4	8	2.33												



Speaking and Listening

School Mean against State Mean^^

School Mean as percentile against SFO percentile range^^



Teacher Judgments against the VELS - Mathematics (primary)

School no: 450

School name: Fitzroy Primary School

Source of data: Data retrieved electronically from CASES21.

Explanation: Teacher judgments of student achievement against the VELS.

Notes: * The school trendline is only plotted when there is data for each calendar year.

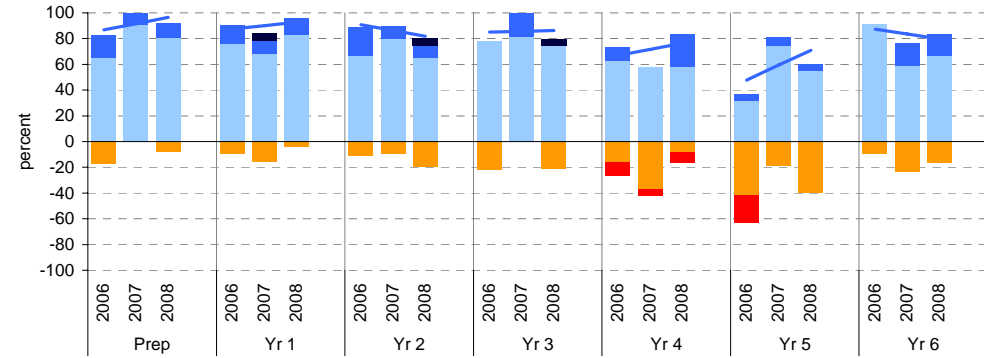
** In 2006, approx. 850 schools assessed their students against the 0.25 VELS scale. 2006 benchmarks are therefore based on a subset of schools.

^ The cutoff between grades A and B changed in 2007. Further information is available on the following website: <http://www.education.vic.gov.au/studentlearning/studentreports/schools/whatsnew.htm>.

^^ 2008 benchmarks and percentiles will be calculated in August, when data from all schools has been submitted.

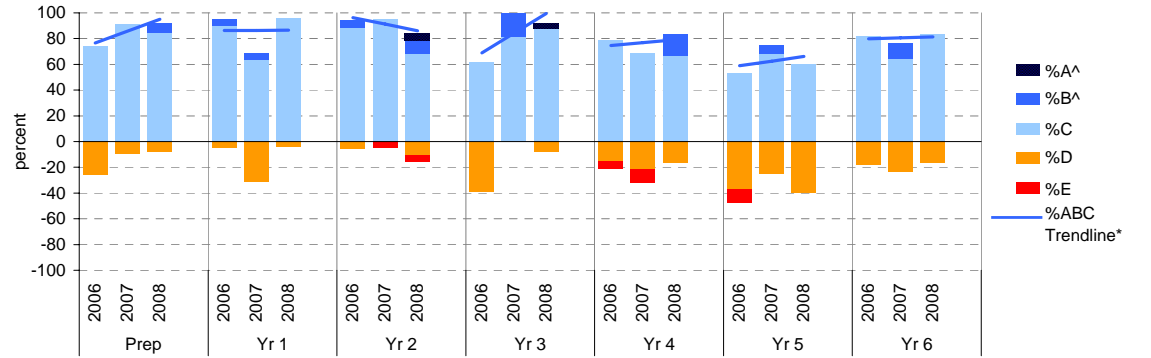
Number

	total students	% of students by grade					Mean Score			total students	% of students by grade					Mean Score			
		A^	B^	C	D	E	School	State**			A^	B^	C	D	E	School	State**		
Prep	2006	23	0	17	65	17	0	0.76	1.00	Yr 4	2006	19	0	11	63	16	11	2.76	2.95
	2007	22	0	9	91	0	0	0.91	1.00		2007	19	0	0	58	37	5	2.55	2.96
	2008	26	0	12	81	8	0	0.84			2008	12	0	25	58	8	8	2.83	
Yr 1	2006	21	0	14	76	10	0	1.45	1.51	Yr 5	2006	19	0	5	32	42	21	2.97	3.43
	2007	19	5	11	68	16	0	1.41	1.51		2007	16	0	6	75	19	0	3.36	3.44
	2008	23	0	13	83	4	0	1.45			2008	20	0	5	55	40	0	3.28	
Yr 2	2006	18	0	22	67	11	0	1.94	1.99	Yr 6	2006	11	0	0	91	9	0	3.91	3.93
	2007	20	0	10	80	10	0	1.91	1.99		2007	17	0	18	59	24	0	3.87	3.95
	2008	20	5	10	65	20	0	1.90			2008	18	0	17	67	17	0	3.90	
Yr 3	2006	18	0	0	78	22	0	2.29	2.46										
	2007	11	0	18	82	0	0	2.45	2.48										
	2008	24	4	0	75	21	0	2.38											



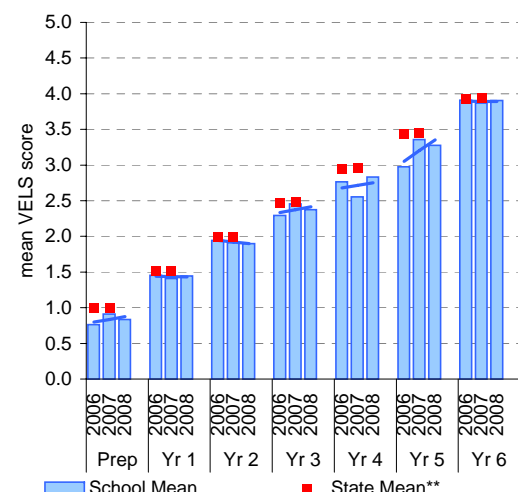
Measurement, Chance and Data

	total students	% of students by grade					Mean Score			total students	% of students by grade					Mean Score			
		A^	B^	C	D	E	School	State**			A^	B^	C	D	E	School	State**		
Prep	2006	23	0	0	74	26	0	0.61	0.97	Yr 4	2006	19	0	0	79	16	5	2.79	2.94
	2007	22	0	0	91	9	0	0.82	0.97		2007	19	0	0	68	21	11	2.66	2.95
	2008	26	0	8	85	8	0	0.81			2008	12	0	17	67	17	0	2.94	
Yr 1	2006	21	0	5	90	5	0	1.45	1.48	Yr 5	2006	19	0	0	53	37	11	3.03	3.42
	2007	19	0	5	63	32	0	1.28	1.49		2007	16	0	6	69	25	0	3.33	3.43
	2008	23	0	0	96	4	0	1.40			2008	20	0	0	60	40	0	3.25	
Yr 2	2006	18	0	6	89	6	0	1.94	1.97	Yr 6	2006	11	0	0	82	18	0	3.89	3.92
	2007	20	0	0	95	0	5	1.91	1.98		2007	17	0	12	65	24	0	3.85	3.93
	2008	19	5	11	68	11	5	1.87			2008	18	0	0	83	17	0	3.88	
Yr 3	2006	18	0	0	61	39	0	2.28	2.45										
	2007	11	0	18	82	0	0	2.48	2.46										
	2008	24	4	0	88	8	0	2.41											

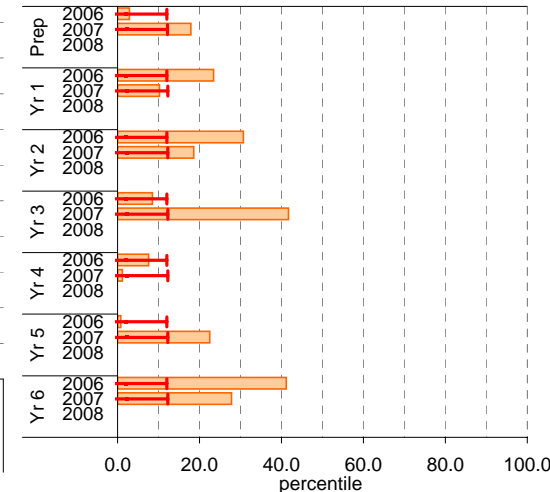


Number

School Mean against State Mean^^

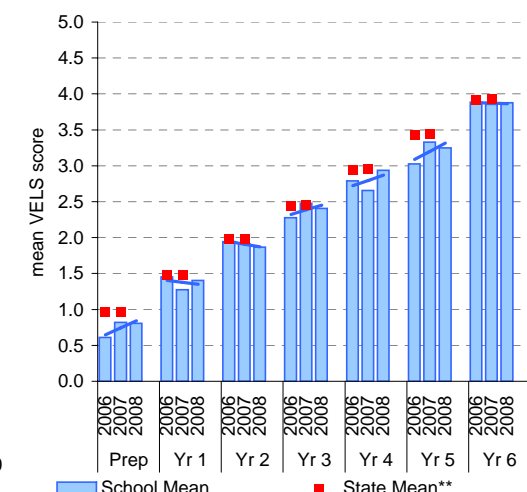


School Mean as percentile against SFO percentile range^^

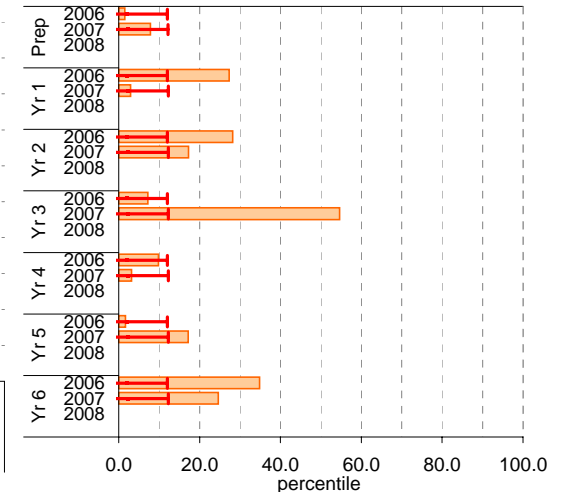


Measurement, Chance and Data

School Mean against State Mean^^



School Mean as percentile against SFO percentile range^^



Teacher Judgments against the VELS - English (primary)

School no: 450
 School name: Fitzroy Primary School
 Source of data: Data retrieved electronically from CASES21.
 Explanation: Teacher judgments of student achievement against the VELS.

Reading

Year Level	Year	Total ¹	Assessed ²	Level 1				Level 2				Level 3				Level 4				Level 5				Level 6				Level 6E			School mean	State mean ³	Difference between school and state mean ⁴					
				0.00	0.50	1.00	1.25	1.50	1.75	2.00	2.25	2.50	2.75	3.00	3.25	3.50	3.75	4.00	4.25	4.50	4.75	5.00	5.25	5.50	5.75	6.00	6.25	6.50	6.75									
prep	2008	25	25	3	5	10	7																												0.85			
prep	2007	22	22	1	4	12	5																												0.92	1.01	-0.09	
yr1	2008	22	22				4	10	7				1																						1.58			
prep	2006	24	23	7	6	9	1																												0.58	1.01	-0.44	
yr1	2007	19	19		1	2	5	7	1	3																									1.42	1.57	-0.15	
yr2	2008	20	18			1	1	1		12	3																								1.92			
prep	2005																																					
yr1	2006	22	21		1		5	12	3																											1.43	1.57	-0.14
yr2	2007	20	20					1	2	10	6	1																								2.05	2.06	-0.01
yr3	2008	24	24	1					1	2	5	13	2																							2.31		
yr1	2005																																					
yr2	2006	18	18				1	4		10	1	2																								1.92	2.04	-0.13
yr3	2007	11	11						2		1	6	1	1																						2.45	2.50	-0.04
yr4	2008	12	12							1	1		1	7	1	1																				2.90		
yr2	2005																																					
yr3	2006	19	18				2	2	4	2	7	1																								2.19	2.49	-0.29
yr4	2007	19	19		1			1		2	4	3	7	1																						2.62	2.97	-0.35
yr5	2008	22	20								4	4	3	9																						3.21		
yr3	2005																																					
yr4	2006	19	19					3		1	3	5	5	2																						2.64	2.96	-0.31
yr5	2007	16	16									4	4	4	7	1																				3.33	3.45	-0.12
yr6	2008	16	16											1	2	2	7	4																		3.92		
yr4	2005																																					
yr5	2006	19	19					1	1	3	3	4	3	4	3	4																				2.93	3.44	-0.51
yr6	2007	17	17										1	4	7	5																				3.74	3.95	-0.22
yr5	2005																																					
yr6	2006	11	11											2	1	6	2																			3.86	3.94	-0.08
yr6	2005																																					

shading indicates a 'C' grade (at the expected standard) on the VELS scale.

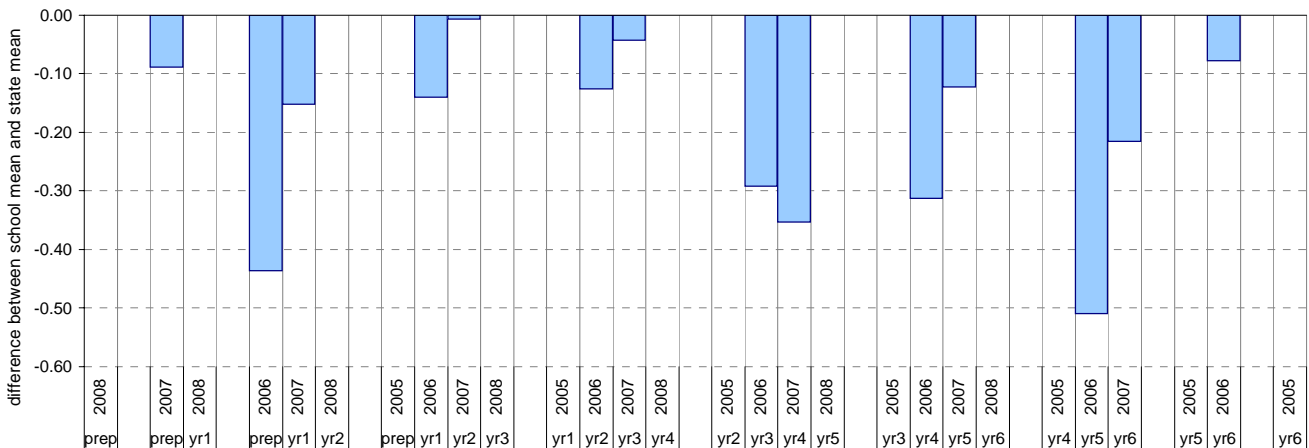
¹ The total number of students eligible to be assessed. This figure will typically match, or be very close to, the Year Level enrolment.

² The number of students assessed against the VELS. The difference between this figure and the total (1) should be accounted for by students assessed against Individual Learning Plans and/or the ESL companion in the case of English.

* In 2006, approx. 850 schools assessed their students against the 0.25 VELS scale. 2006 benchmarks are therefore based on a subset of schools.

⁴ 2008 benchmarks will be calculated in August, when data from all schools has been submitted.

Difference between school mean and state mean⁴, by cohort group



Teacher Judgments against the VELS - English (primary)

School no: 450
School name: Fitzroy Primary School
Source of data: Data retrieved electronically from CASES21.
Explanation: Teacher judgments of student achievement against the VELS.

Writing

Year Level	Year	Total ¹	Assessed ²	Level 1			Level 2				Level 3				Level 4				Level 5				Level 6				Level 6E			School mean	State mean* [^]	Difference between school and state mean* [^]							
				0.00	0.50	1.00	1.25	1.50	1.75	2.00	2.25	2.50	2.75	3.00	3.25	3.50	3.75	4.00	4.25	4.50	4.75	5.00	5.25	5.50	5.75	6.00	6.25	6.50	6.75										
prep	2008	25	25	2	5	14	4																									0.86							
prep	2007	22	22	1	3	18																										0.89	0.97	-0.08					
yr1	2008	22	22		1	1	5	11	4																								1.42						
prep	2006	24	23	4	7	12																											0.67	0.97	-0.29				
yr1	2007	19	19		1	2	7	5	4																								1.36	1.49	-0.13				
yr2	2008	20	18				3	5	7	3																								1.89					
prep	2005																																						
yr1	2006	22	21		1	2	5	11	2																										1.37	1.47	-0.10		
yr2	2007	20	20						3	14	2	1																							2.01	1.96	0.05		
yr3	2008	24	24						1	3	11	7	2																						2.33				
yr1	2005																																						
yr2	2006	18	18				3	3	10	2																										1.90	1.95	-0.04	
yr3	2007	11	11				2		7	2	7																									2.32	2.43	-0.12	
yr4	2008	12	12				1			1	3	5	2																							2.81			
yr2	2005																																						
yr3	2006	19	18				2	4	3	1	8																									2.13	2.42	-0.29	
yr4	2007	19	19		1		1	1	1	3	3	4	5																							2.45	2.91	-0.46	
yr5	2008	22	20							1	4	4	3	8																						3.16			
yr3	2005																																						
yr4	2006	19	19				2	2		2	4	3	6																								2.49	2.89	-0.41
yr5	2007	16	16										3	3	8	1	1																			3.41	3.39	0.02	
yr6	2008	16	16											1	2	11	1	1																		3.97			
yr4	2005																																						
yr5	2006	19	19				2		4	3	5	1	4																								2.87	3.38	-0.51
yr6	2007	17	17										1	4	6	6																				3.75	3.89	-0.14	
yr5	2005																																						
yr6	2006	11	11										1	1	1	8																				3.86	3.88	-0.02	
yr6	2005																																						

shading indicates a 'C' grade (at the expected standard) on the VELS scale.

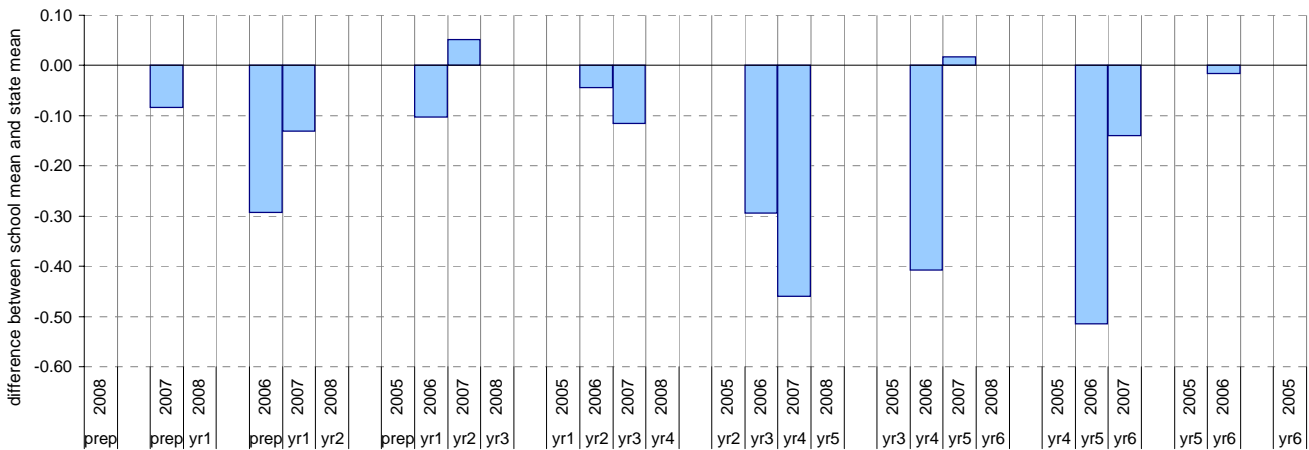
¹ The total number of students eligible to be assessed. This figure will typically match, or be very close to, the Year Level enrolment.

² The number of students assessed against the VELS. The difference between this figure and the total (1) should be accounted for by students assessed against Individual Learning Plans and/or the ESL companion in the case of English.

* In 2006, approx. 850 schools assessed their students against the 0.25 VELS scale. 2006 benchmarks are therefore based on a subset of schools.

[^] 2008 benchmarks will be calculated in August, when data from all schools has been submitted.

Difference between school mean and state mean*[^], by cohort group



Teacher Judgments against the VELS - English (primary)

School no: 450
 School name: Fitzroy Primary School
 Source of data: Data retrieved electronically from CASES21.
 Explanation: Teacher judgments of student achievement against the VELS.

Speaking and Listening

Year Level	Year	Total ¹	Assessed ²	Level 1				Level 2				Level 3				Level 4				Level 5				Level 6				Level 6E				School mean	State mean ³	Difference between school and state mean ⁴										
				0.00	0.50	1.00	1.25	1.50	1.75	2.00	2.25	2.50	2.75	3.00	3.25	3.50	3.75	4.00	4.25	4.50	4.75	5.00	5.25	5.50	5.75	6.00	6.25	6.50	6.75															
prep	2008	25	25	1	11	11	2																														0.76							
prep	2007	22	22	1	7	12	2																														0.82	0.97	-0.15					
yr1	2008	22	22			1	7	13	1																												1.41							
prep	2006	24	23	2	11	10																															0.67	0.97	-0.29					
yr1	2007	19	19		1	5	2	11																													1.29	1.48	-0.19					
yr2	2008	20	18				1	2	4	10	1																											1.86						
prep	2005																																											
yr1	2006	22	21		1	2	2	14	2																														1.40	1.48	-0.07			
yr2	2007	20	20			1		8	10	1																													1.86	1.98	-0.11			
yr3	2008	24	24				1	1		1	6	14	1																										2.33					
yr1	2005																																											
yr2	2006	18	18					3	2	10	3																													1.93	1.98	-0.05		
yr3	2007	11	11						2		3	4	1	1																										2.41	2.46	-0.05		
yr4	2008	12	12								1	1	3	5	1	1																								2.90				
yr2	2005																																											
yr3	2006	19	18				1	2	1	5	1	7		1																											2.15	2.45	-0.30	
yr4	2007	19	19				1	1	1		4	2	3	7																											2.51	2.94	-0.43	
yr5	2008	22	20									3	4	5	8																										3.22			
yr3	2005																																											
yr4	2006	19	19				1	2			6	3	1	6																											2.42	2.94	-0.52	
yr5	2007	16	16											4	3	8	1																								3.34	3.43	-0.09	
yr6	2008	16	16												1	3	10	2																								3.94		
yr4	2005																																											
yr5	2006	19	19						2	1	3	3	4	2	4																											2.87	3.43	-0.56
yr6	2007	17	17												2	6	9																									3.85	3.94	-0.09
yr5	2005																																											
yr6	2006	11	11											1	1	1	8																									3.86	3.93	-0.07
yr6	2005																																											

shading indicates a 'C' grade (at the expected standard) on the VELS scale.

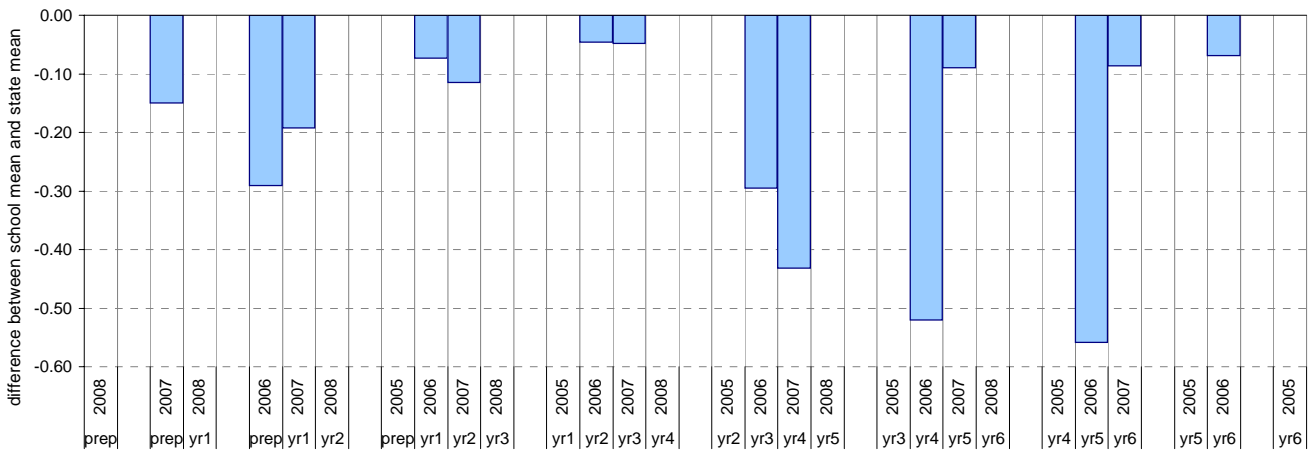
¹ The total number of students eligible to be assessed. This figure will typically match, or be very close to, the Year Level enrolment.

² The number of students assessed against the VELS. The difference between this figure and the total (1) should be accounted for by students assessed against Individual Learning Plans and/or the ESL companion in the case of English.

* In 2006, approx. 850 schools assessed their students against the 0.25 VELS scale. 2006 benchmarks are therefore based on a subset of schools.

⁴ 2008 benchmarks will be calculated in August, when data from all schools has been submitted.

Difference between school mean and state mean⁴, by cohort group



Teacher Judgments against the VELS - Mathematics (primary)

School no: 450
School name: Fitzroy Primary School
Source of data: Data retrieved electronically from CASES21.
Explanation: Teacher judgments of student achievement against the VELS.

Number

Year Level	Year	Total ¹	Assessed ²	Level 1				Level 2				Level 3				Level 4				Level 5				Level 6				Level 6E				School mean	State mean ³	Difference between school and state mean ⁴			
				0.00	0.50	1.00	1.25	1.50	1.75	2.00	2.25	2.50	2.75	3.00	3.25	3.50	3.75	4.00	4.25	4.50	4.75	5.00	5.25	5.50	5.75	6.00	6.25	6.50	6.75								
prep	2008	26	26	2	6	15	3																												0.84		
prep	2007	22	22		5	15	2																												0.91	1.00	-0.09
yr1	2008	23	23		1	6	13	3																											1.45		
prep	2006	24	23	4	5	10	4																												0.76	1.00	-0.24
yr1	2007	19	19		3	5	8	2	1																									1.41	1.51	-0.10	
yr2	2008	20	20				4	4	9	2	1																								1.90		
prep	2005																																				
yr1	2006	22	21		2	3	13	3																											1.45	1.51	-0.06
yr2	2007	20	20			1	1	4	12	2																									1.91	1.99	-0.08
yr3	2008	24	24				1	4	3	15	1																								2.38		
yr1	2005																																				
yr2	2006	18	18				2	5	7	3	1																								1.94	1.99	-0.04
yr3	2007	11	11							4	5	2																							2.45	2.48	-0.02
yr4	2008	12	12					1	1	4	3	3																							2.83		
yr2	2005																																				
yr3	2006	19	18				1	3	6	8																									2.29	2.46	-0.17
yr4	2007	19	19			1			5	2	8	3																							2.55	2.96	-0.41
yr5	2008	22	20							1	7	2	9	1																					3.28		
yr3	2005																																				
yr4	2006	19	19					2	1	2	7	5				2																			2.76	2.95	-0.18
yr5	2007	16	16									3			4	8	1																		3.36	3.44	-0.09
yr6	2008	18	18												2	1	2	10	3																3.90		
yr4	2005																																				
yr5	2006	19	19				1	1	2	1	7	3	3	1																					2.97	3.43	-0.46
yr6	2007	17	17									1	3	3	7	3																			3.87	3.95	-0.08
yr5	2005																																				
yr6	2006	11	11									1		1	9																				3.91	3.93	-0.02
yr6	2005																																				

shading indicates a 'C' grade (at the expected standard) on the VELS scale.

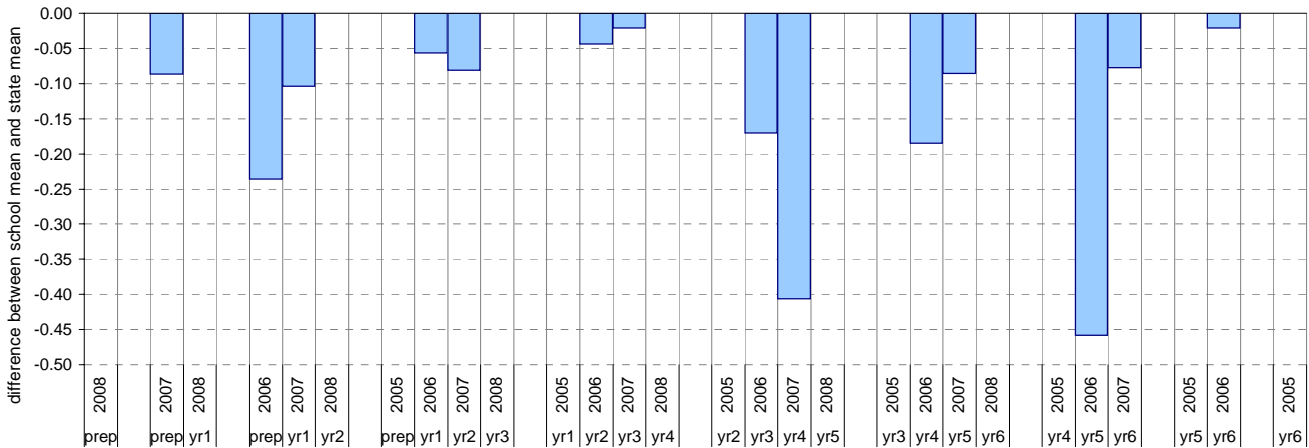
¹ The total number of students eligible to be assessed. This figure will typically match, or be very close to, the Year Level enrolment.

² The number of students assessed against the VELS. The difference between this figure and the total (1) should be accounted for by students assessed against Individual Learning Plans and/or the ESL companion in the case of English.

* In 2006, approx. 850 schools assessed their students against the 0.25 VELS scale. 2006 benchmarks are therefore based on a subset of schools.

⁴ 2008 benchmarks will be calculated in August, when data from all schools has been submitted.

Difference between school mean and state mean⁴, by cohort group



Teacher Judgments against the VELS - Mathematics (primary)

School no: 450
 School name: Fitzroy Primary School
 Source of data: Data retrieved electronically from CASES21.
 Explanation: Teacher judgments of student achievement against the VELS.

Measurement, Chance and Data

Year Level	Year	Total ¹	Assessed ²	Level 1			Level 2			Level 3			Level 4			Level 5			Level 6			Level 6E			School mean	State mean ³	Difference between school and state mean ⁴	
				0.00	0.50	1.00	1.25	1.50	1.75	2.00	2.25	2.50	2.75	3.00	3.25	3.50	3.75	4.00	4.25	4.50	4.75	5.00	5.25	5.50				5.75
prep	2008	26	26	2	7	15	2																		0.81			
prep	2007	22	22	2	4	16																			0.82	0.97	-0.15	
yr1	2008	23	23			1	7	15																	1.40			
prep	2006	24	23	6	6	11																			0.61	0.97	-0.36	
yr1	2007	19	19		1	5	4	8	1																1.28	1.49	-0.21	
yr2	2008	20	19			1	2		4	9	2	1													1.87			
prep	2005																											
yr1	2006	22	21			1	3	16	1																1.45	1.48	-0.03	
yr2	2007	20	20			1			3	16															1.91	1.98	-0.06	
yr3	2008	24	24							2	7	14	1												2.41			
yr1	2005																											
yr2	2006	18	18					1	3	13															1.94	1.97	-0.03	
yr3	2007	11	11						3	6	2														2.48	2.46	0.02	
yr4	2008	12	12						1	1	8	2													2.94			
yr2	2005																											
yr3	2006	19	18					7	2	9															2.28	2.45	-0.17	
yr4	2007	19	19			1			1	3	5	8													2.66	2.95	-0.29	
yr5	2008	22	20							1	7	3	9												3.25			
yr3	2005																											
yr4	2006	19	19			1				3	3	12													2.79	2.94	-0.15	
yr5	2007	16	16								4	4	7	1											3.33	3.43	-0.11	
yr6	2008	18	18									4	1	2	2	13									3.88			
yr4	2005																											
yr5	2006	19	19				2			3	4	7	3												3.03	3.42	-0.40	
yr6	2007	17	17									4	4	7	2										3.85	3.93	-0.08	
yr5	2005																											
yr6	2006	11	11									1	1	9											3.89	3.92	-0.03	
yr6	2005																											

shading indicates a 'C' grade (at the expected standard) on the VELS scale.

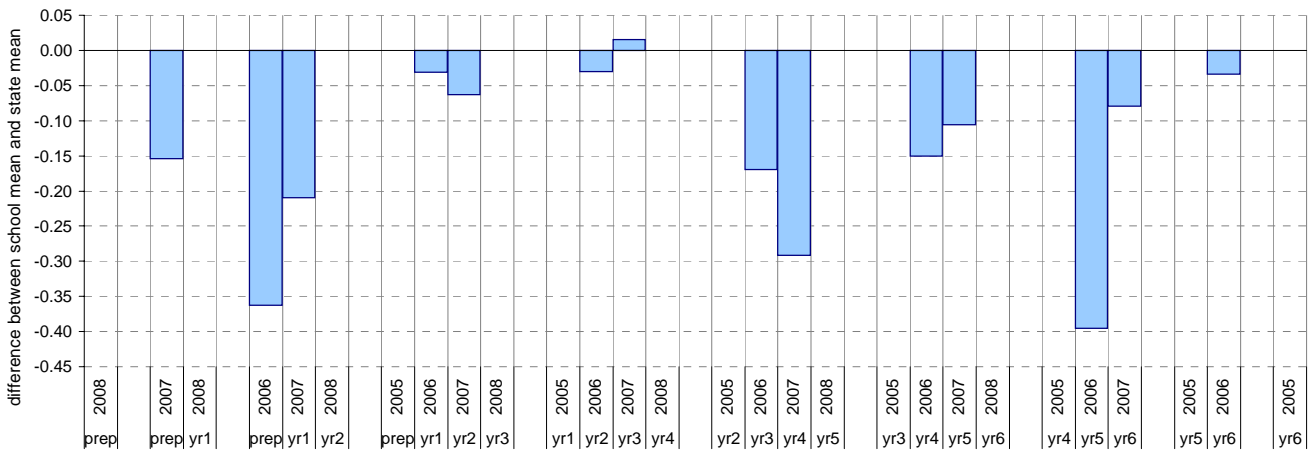
¹ The total number of students eligible to be assessed. This figure will typically match, or be very close to, the Year Level enrolment.

² The number of students assessed against the VELS. The difference between this figure and the total (1) should be accounted for by students assessed against Individual Learning Plans and/or the ESL companion in the case of English.

* In 2006, approx. 850 schools assessed their students against the 0.25 VELS scale. 2006 benchmarks are therefore based on a subset of schools.

⁴ 2008 benchmarks will be calculated in August, when data from all schools has been submitted.

Difference between school mean and state mean⁴, by cohort group



NAPLAN Year 3 and 5: Reading

School no: 450

School name: Fitzroy Primary School

Source of data: Victorian Curriculum and Assessment Authority.

Explanation: The National Assessment Program - Literacy and Numeracy (NAPLAN) is conducted each year for students in Years 3, 5, 7 and 9. For more detailed NAPLAN data, refer to the NAPLAN Data Service website at <http://naplands.vcaa.vic.edu.au>. A reference guide for analysing NAPLAN data is available at <http://www.vcaa.vic.edu.au/vcaa/prep10/naplan/schools/analysingnaplandata.pdf>.

Notes: * % student participation = (students who participated in NAPLAN / February enrolments) * 100

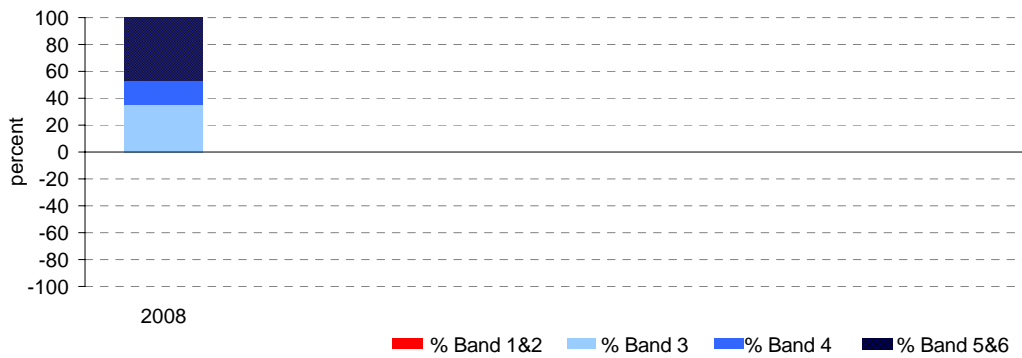
Year 3

	student participation		Percent of students by NAP Band						Mean Scaled Score	
	(n)	(%)*	Band 1	Band 2	Band 3	Band 4	Band 5	Band 6	School	State
2008	17	94	0	0	35	18	24	24	428.8	415.8

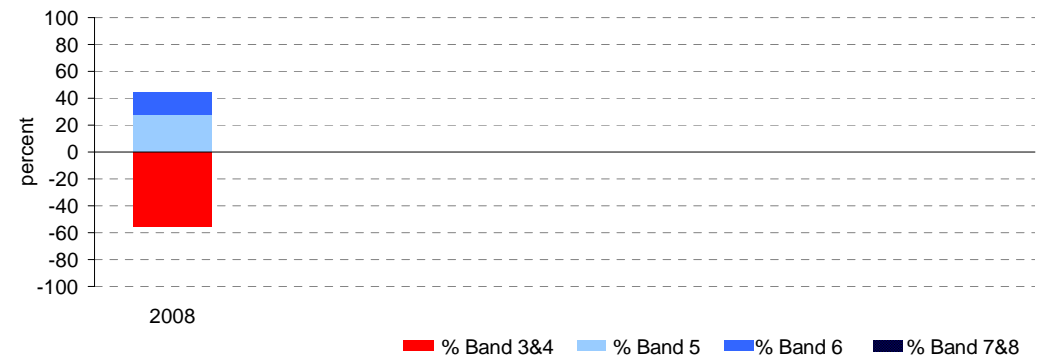
Year 5

	student participation		Percent of students by NAP Band						Mean Scaled Score	
	(n)	(%)*	Band 3	Band 4	Band 5	Band 6	Band 7	Band 8	School	State
2008	18	100	33	22	28	17	0	0	417.6	492.1

Percent of students by NAP Band

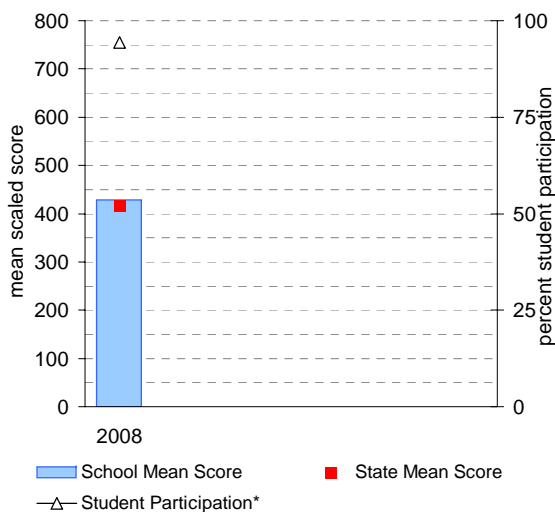


Percent of students by NAP Band

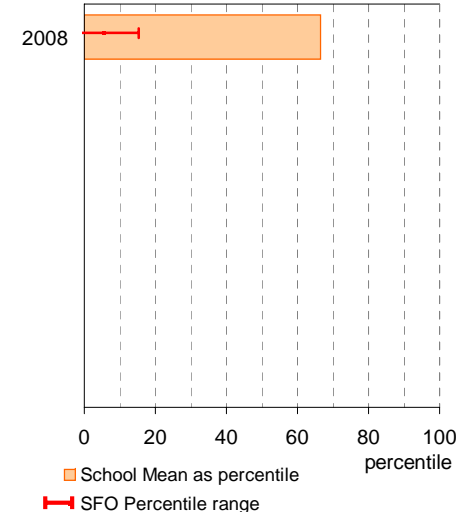


Year 3

School Mean against State Mean, including Participation

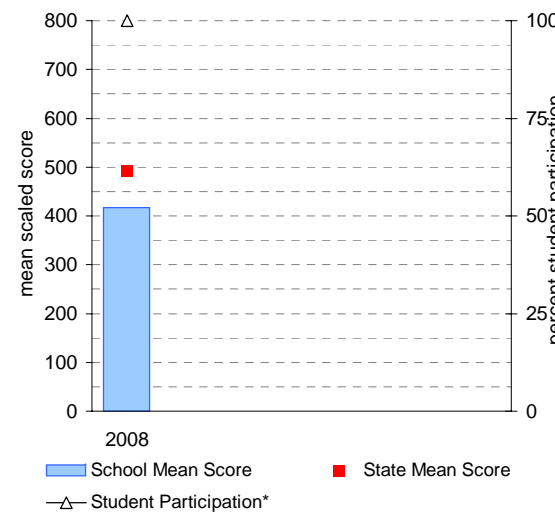


School Mean as percentile against SFO percentile range

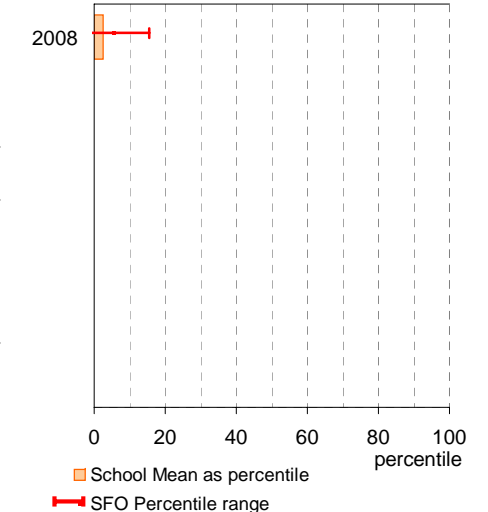


Year 5

School Mean against State Mean, including Participation



School Mean as percentile against SFO percentile range



NAPLAN Year 3 and 5: Writing

School no: 450

School name: Fitzroy Primary School

Source of data: Victorian Curriculum and Assessment Authority.

Explanation: The National Assessment Program - Literacy and Numeracy (NAPLAN) is conducted each year for students in Years 3, 5, 7 and 9. For more detailed NAPLAN data, refer to the NAPLAN Data Service website at <http://naplands.vcaa.vic.edu.au>. A reference guide for analysing NAPLAN data is available at <http://www.vcaa.vic.edu.au/vcaa/prep10/naplan/schools/analysingnaplandata.pdf>.

Notes: * % student participation = (students who participated in NAPLAN / February enrolments) * 100

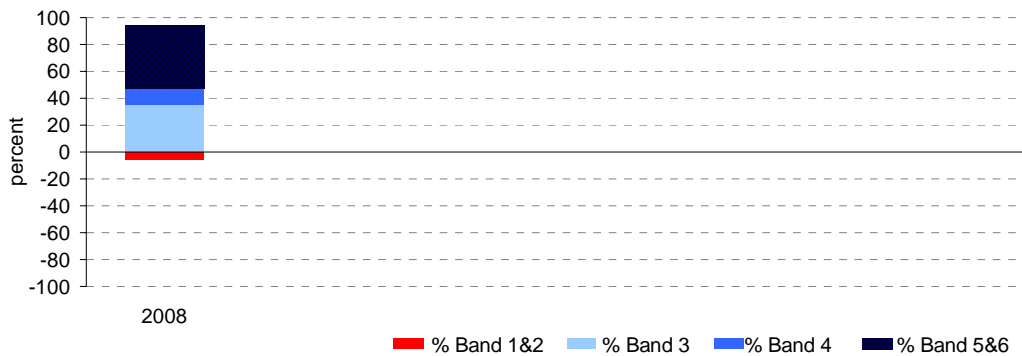
Year 3

	student participation		Percent of students by NAP Band						Mean Scaled Score	
	(n)	(%)*	Band 1	Band 2	Band 3	Band 4	Band 5	Band 6	School	State
2008	17	94	0	6	35	12	18	29	402.3	421.2

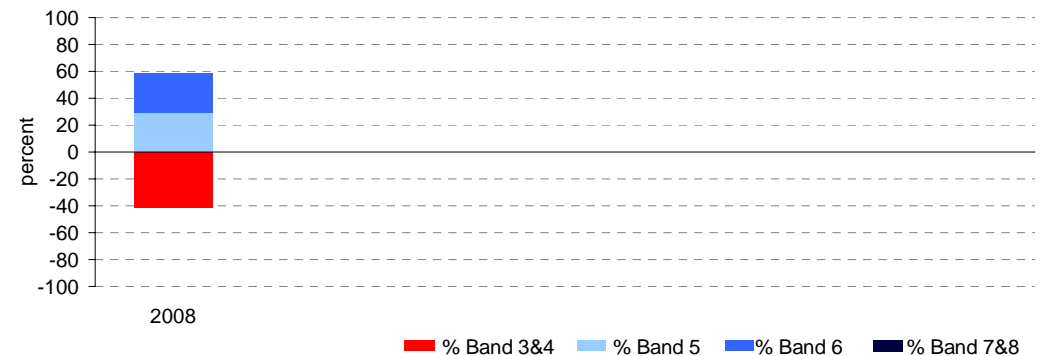
Year 5

	student participation		Percent of students by NAP Band						Mean Scaled Score	
	(n)	(%)*	Band 3	Band 4	Band 5	Band 6	Band 7	Band 8	School	State
2008	17	94	29	12	29	29	0	0	428.8	496.0

Percent of students by NAP Band

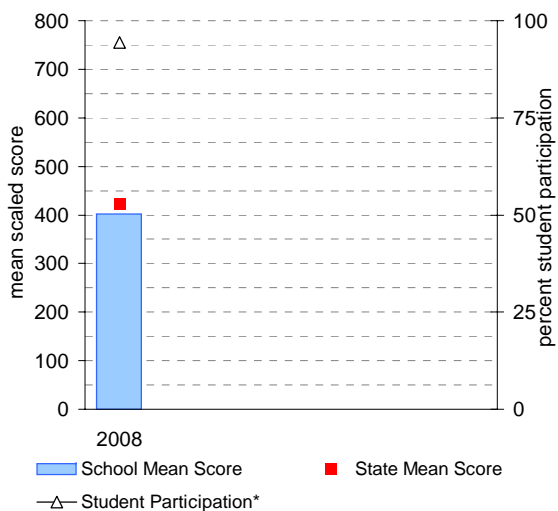


Percent of students by NAP Band

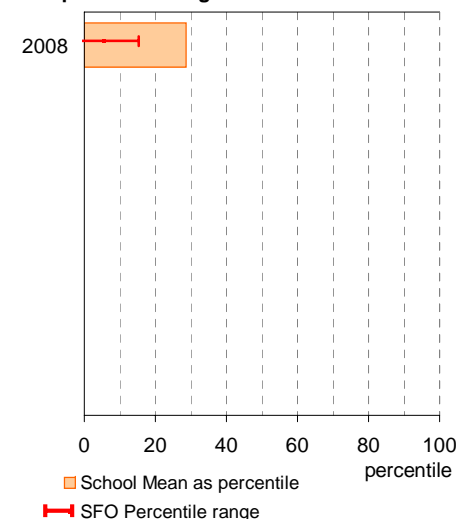


Year 3

School Mean against State Mean, including Participation

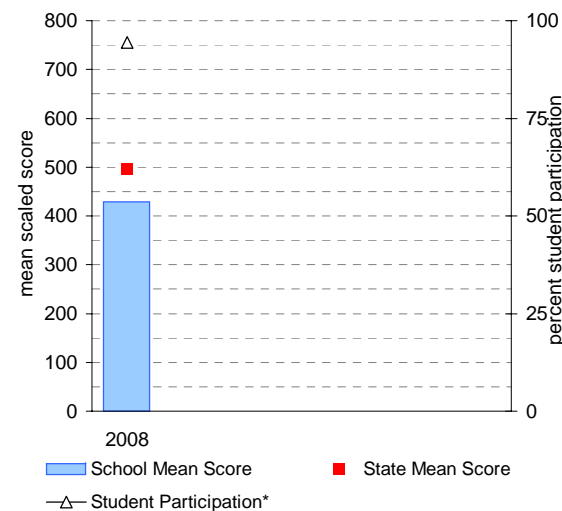


School Mean as percentile against SFO percentile range

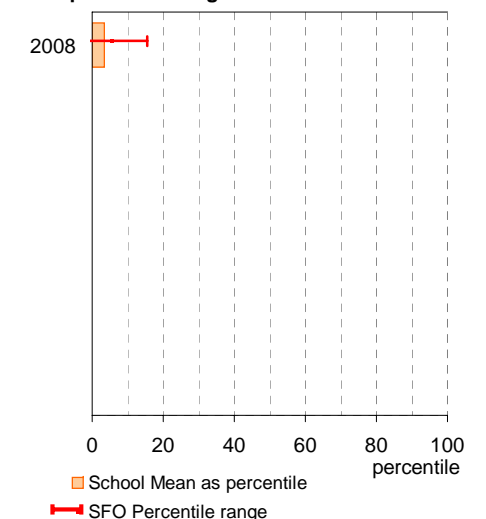


Year 5

School Mean against State Mean, including Participation



School Mean as percentile against SFO percentile range



NAPLAN Year 3 and 5: Numeracy

School no: 450

School name: Fitzroy Primary School

Source of data: Victorian Curriculum and Assessment Authority.

Explanation: The National Assessment Program - Literacy and Numeracy (NAPLAN) is conducted each year for students in Years 3, 5, 7 and 9. For more detailed NAPLAN data, refer to the NAPLAN Data Service website at <http://naplands.vcaa.vic.edu.au>. A reference guide for analysing NAPLAN data is available at <http://www.vcaa.vic.edu.au/vcaa/prep10/naplan/schools/analysingnaplandata.pdf>.

Notes: * % student participation = (students who participated in NAPLAN / February enrolments) * 100

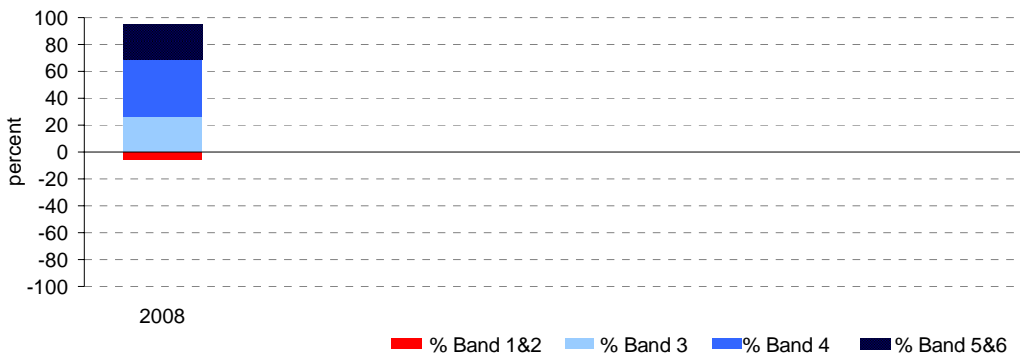
Year 3

	student participation		Percent of students by NAP Band						Mean Scaled Score	
	(n)	(%)*	Band 1	Band 2	Band 3	Band 4	Band 5	Band 6	School	State
2008	19	106	0	5	26	42	21	5	395.9	416.1

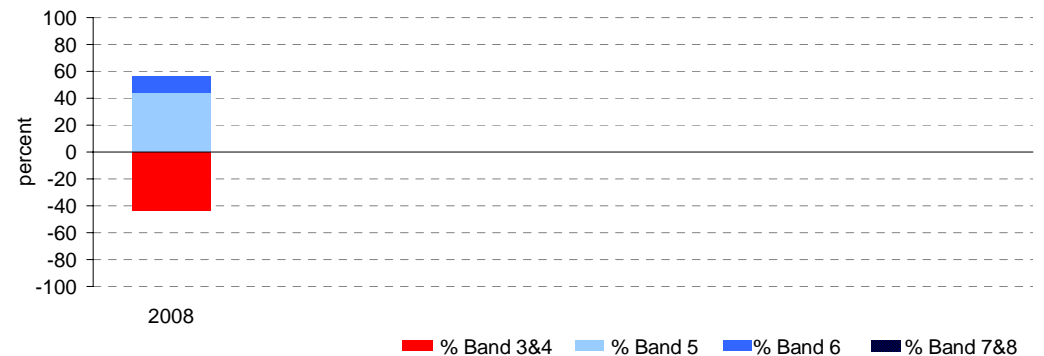
Year 5

	student participation		Percent of students by NAP Band						Mean Scaled Score	
	(n)	(%)*	Band 3	Band 4	Band 5	Band 6	Band 7	Band 8	School	State
2008	16	89	13	31	44	13	0	0	432.8	487.8

Percent of students by NAP Band

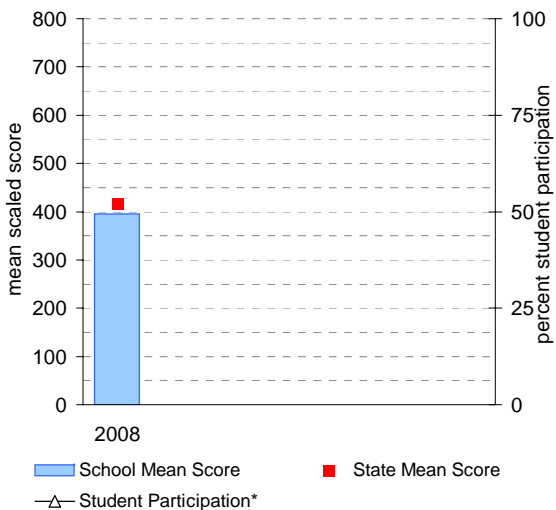


Percent of students by NAP Band

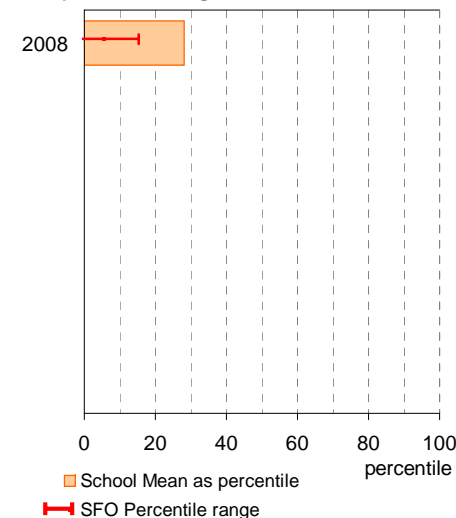


Year 3

School Mean against State Mean, including Participation

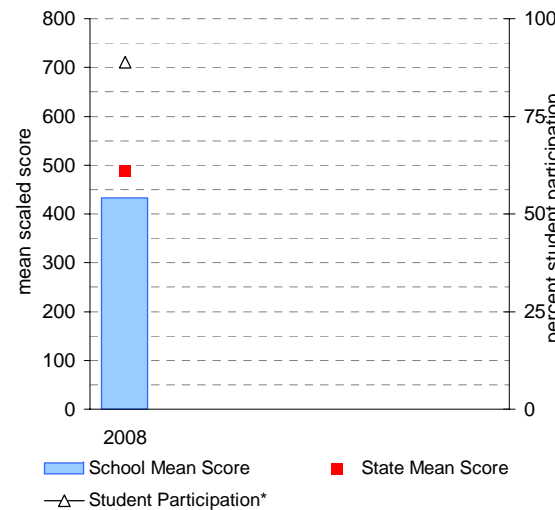


School Mean as percentile against SFO percentile range

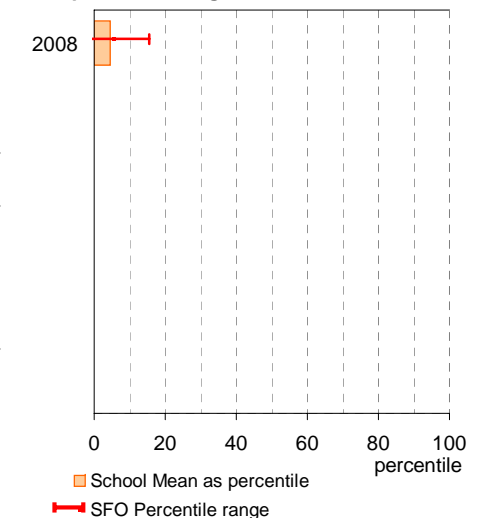


Year 5

School Mean against State Mean, including Participation



School Mean as percentile against SFO percentile range



AIM Year 3 and 5: Reading

School no: 450

School name: Fitzroy Primary School

Source of data: Victorian Curriculum and Assessment Authority.

Explanation: The Achievement Improvement Monitor (AIM) was a statewide assessment program conducted each year up until and including 2007 for students in Years 3, 5, 7 and 9. This has now been replaced by NAPLAN. For more detailed AIM data, refer to the AIM Data Service website at <http://aimds.vcaa.vic.edu.au>.

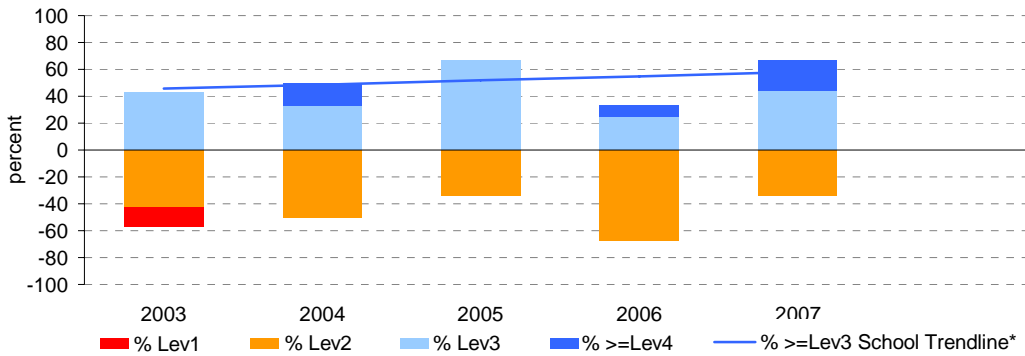
Notes: * The school trendline is only plotted when there is data for each calendar year.

** % student participation = (students who participated in AIM / Feb enrolments) * 100

Year 3

	student participation		Percent of students by VEL5 level							Mean CSF / VEL5 Score	
	(n)	(%)**	Lev1	Lev2	Lev3	Lev4	Lev5	Lev6	Lev6E	School	State
2003	7	78	14	43	43	0	0	0	0	1.9	2.3
2004	6	46	0	50	33	17	0	0	0	2.0	2.3
2005	9	56	0	33	67	0	0	0	0	2.1	2.4
2006	12	75	0	67	25	8	0	0	0	1.9	2.3
2007	9	64	0	33	44	22	0	0	0	2.3	2.3

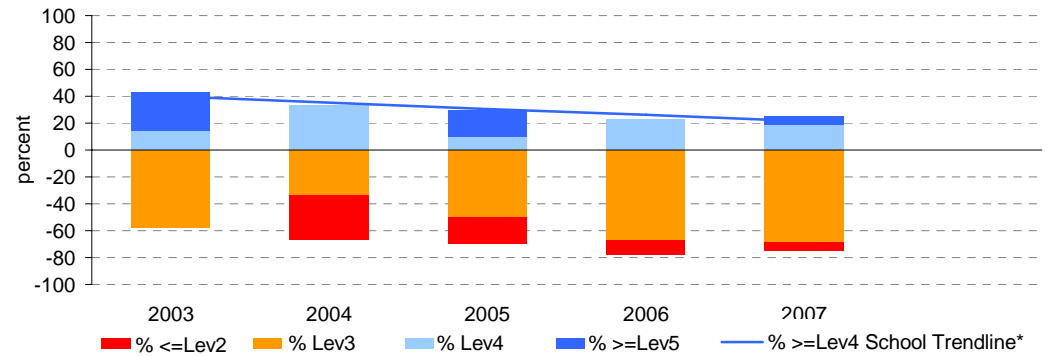
Percent of students by VEL5 level



Year 5

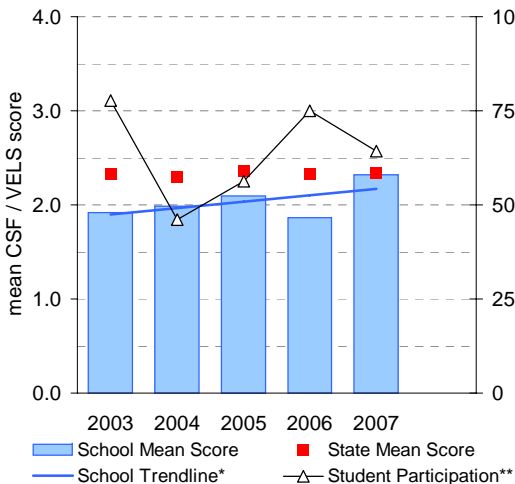
	student participation		Percent of students by VEL5 level							Mean CSF / VEL5 Score	
	(n)	(%)**	Lev1	Lev2	Lev3	Lev4	Lev5	Lev6	Lev6E	School	State
2003	7	64	0	0	57	14	29	0	0	3.1	3.2
2004	6	43	0	33	33	33	0	0	0	2.6	3.2
2005	10	83	0	20	50	10	20	0	0	2.9	3.2
2006	9	53	0	11	67	22	0	0	0	2.6	3.1
2007	16	76	0	6	69	19	6	0	0	2.7	3.2

Percent of students by VEL5 level

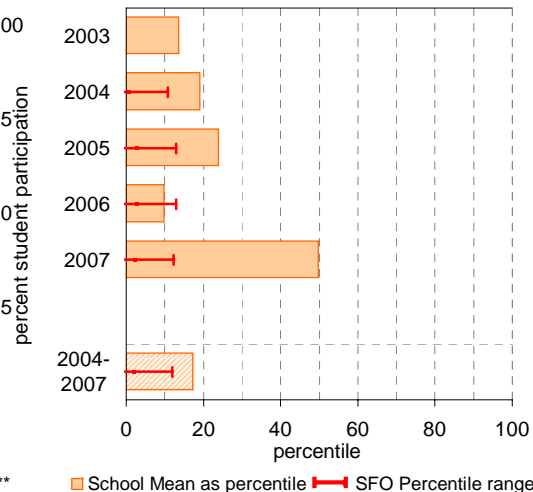


Year 3

School Mean against State Mean, including Participation

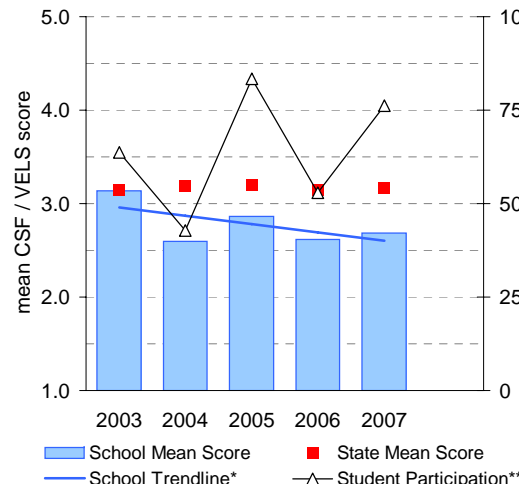


School Mean as percentile against SFO percentile range

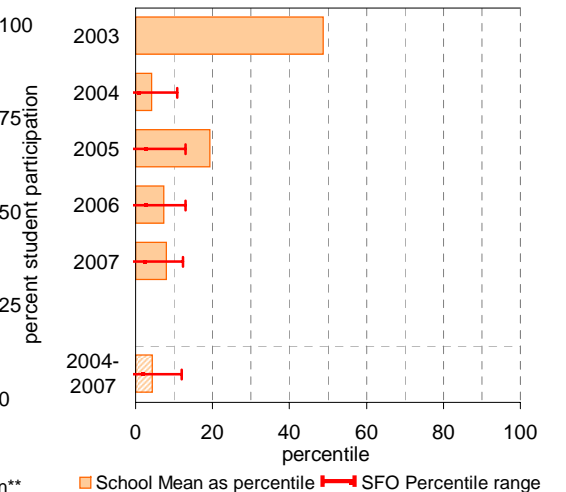


Year 5

School Mean against State Mean, including Participation



School Mean as percentile against SFO percentile range



AIM Year 3 and 5: Number

School no: 450

School name: Fitzroy Primary School

Source of data: Victorian Curriculum and Assessment Authority.

Explanation: The Achievement Improvement Monitor (AIM) was a statewide assessment program conducted each year up until and including 2007 for students in Years 3, 5, 7 and 9. This has now been replaced by NAPLAN. For more detailed AIM data, refer to the AIM Data Service website at <http://aimds.vcaa.vic.edu.au>.

Notes: * The school trendline is only plotted when there is data for each calendar year.
 ** % student participation = (students who participated in AIM / Feb enrolments) * 100

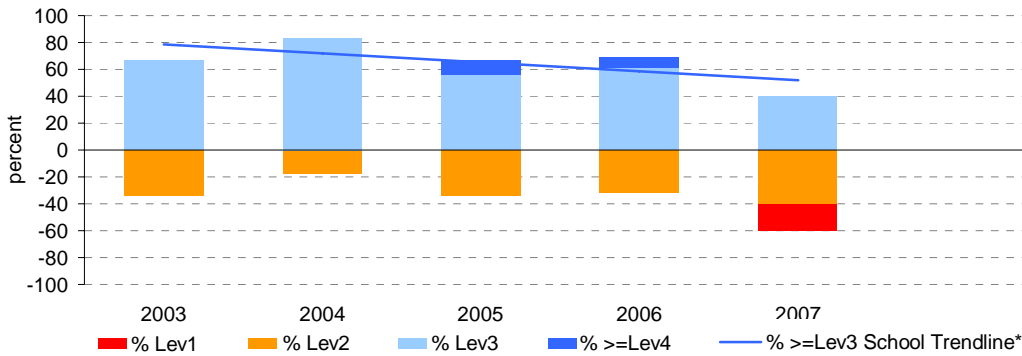
Year 3

	student participation		Percent of students by VEL5 level							Mean CSF / VEL5 Score	
	(n)	(%)**	Lev1	Lev2	Lev3	Lev4	Lev5	Lev6	Lev6E	School	State
2003	6	67	0	33	67	0	0	0	0	2.1	2.4
2004	6	46	0	17	83	0	0	0	0	2.4	2.4
2005	9	56	0	33	56	11	0	0	0	2.2	2.4
2006	13	81	0	31	62	8	0	0	0	2.1	2.4
2007	10	71	20	40	40	0	0	0	0	1.9	2.4

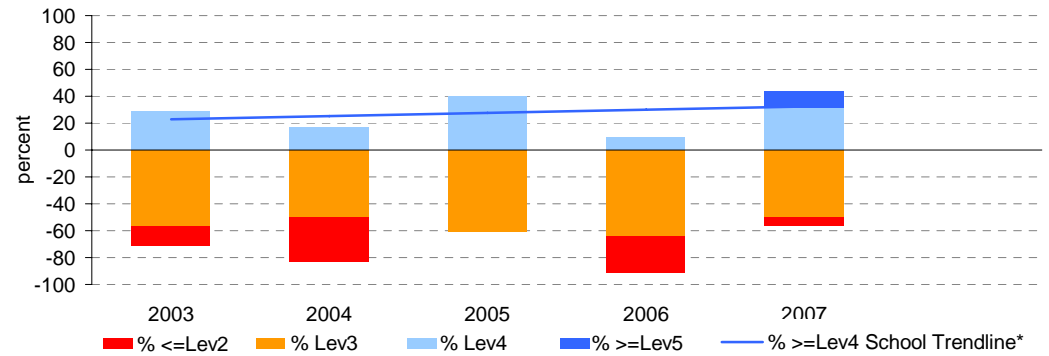
Year 5

	student participation		Percent of students by VEL5 level							Mean CSF / VEL5 Score	
	(n)	(%)**	Lev1	Lev2	Lev3	Lev4	Lev5	Lev6	Lev6E	School	State
2003	7	64	0	14	57	29	0	0	0	2.7	3.1
2004	6	43	0	33	50	17	0	0	0	2.4	3.2
2005	10	83	0	0	60	40	0	0	0	2.9	3.2
2006	11	65	0	27	64	9	0	0	0	2.4	3.2
2007	16	76	0	6	50	31	13	0	0	3.0	3.2

Percent of students by VEL5 level

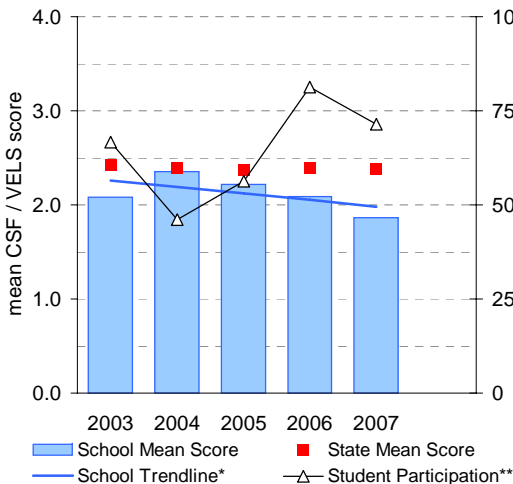


Percent of students by VEL5 level

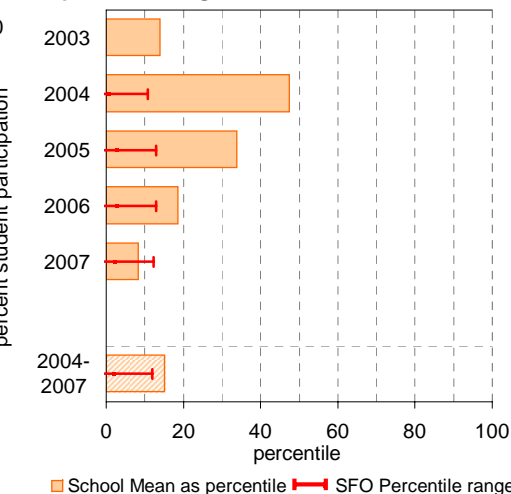


Year 3

School Mean against State Mean, including Participation

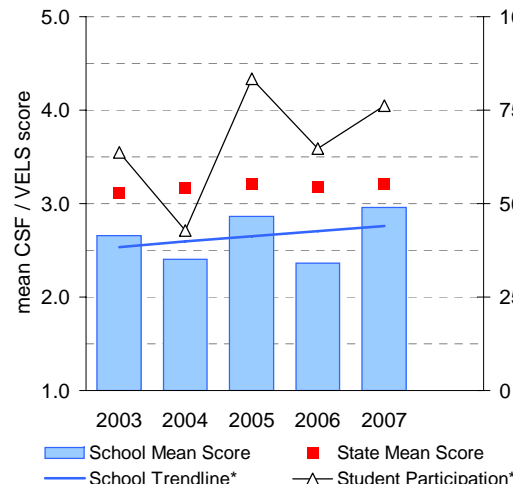


School Mean as percentile against SFO percentile range

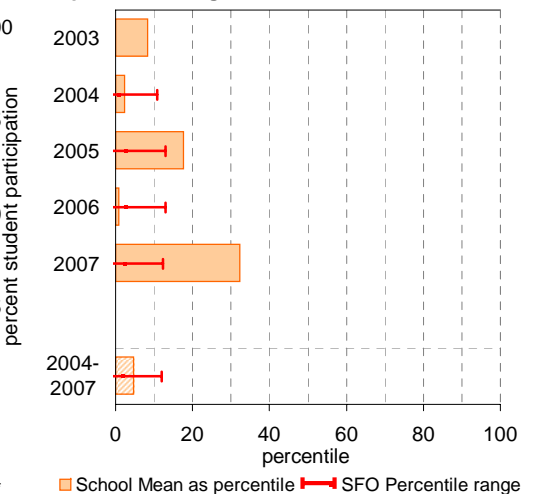


Year 5

School Mean against State Mean, including Participation



School Mean as percentile against SFO percentile range



Teacher Assessment of Student Progress (PSD students)

School no: 450

School name: Fitzroy Primary School

Explanation: Teachers assess their students' progress against the 8 VELS Domains / CSF KLAs using a 6-point scale (students in special schools and those who cannot be assessed against the VELS / CSF).

Source of data: Data transmitted from school to DEECD via an online web-form.

	No progress (%)	Little progress (%)	Satisfactory progress (%)	Good progress (%)	Very good progress (%)	Excellent progress (%)	Total students assessed ¹ (no.)
--	--------------------	---------------------------	---------------------------------	-------------------------	------------------------------	------------------------------	--

2004 (by CSF KLA)

English
Mathematics
Science
Technology
The Arts
H&PE
SOSE

2005 (by CSF KLA)

English
Mathematics
Science
Technology
The Arts
H&PE
SOSE

2006 (by VELS Domain)

English
Mathematics
Science
ICT
The Arts
H&PE
Civics & Citizenship

2007 (by VELS Domain)

English
Mathematics
Science
ICT
The Arts
H&PE
Civics & Citizenship

2008 (by VELS Domain)

English
Mathematics
Science
ICT
The Arts
H&PE
Civics & Citizenship

2007 Primary state benchmarks (by VELS Domain)*

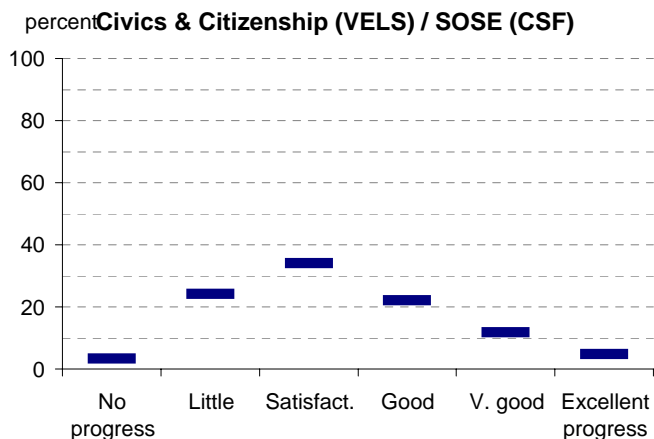
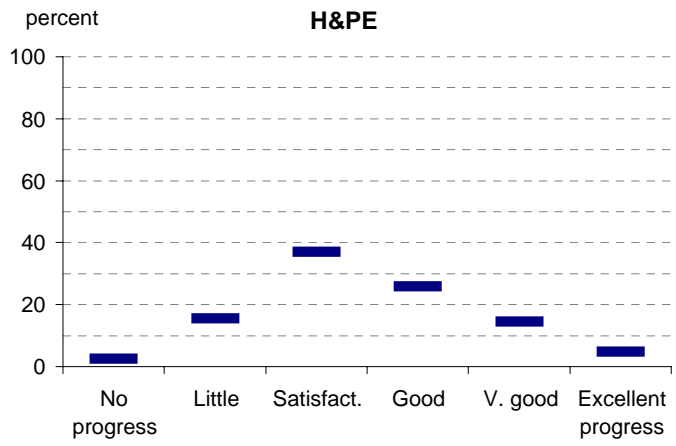
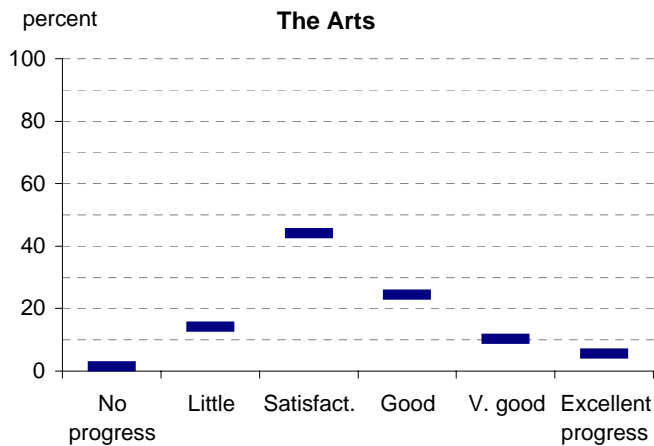
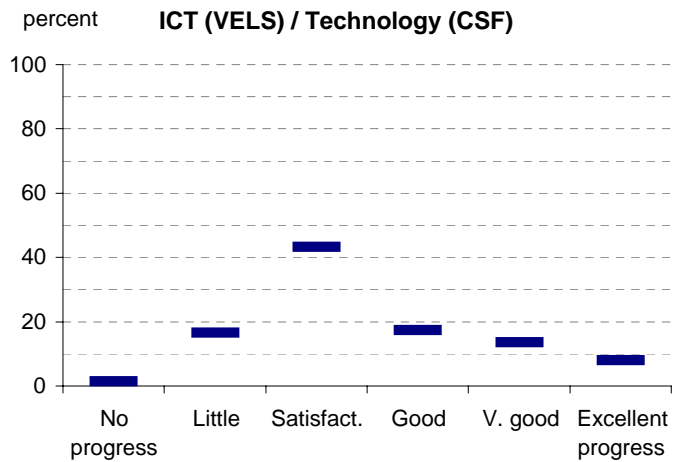
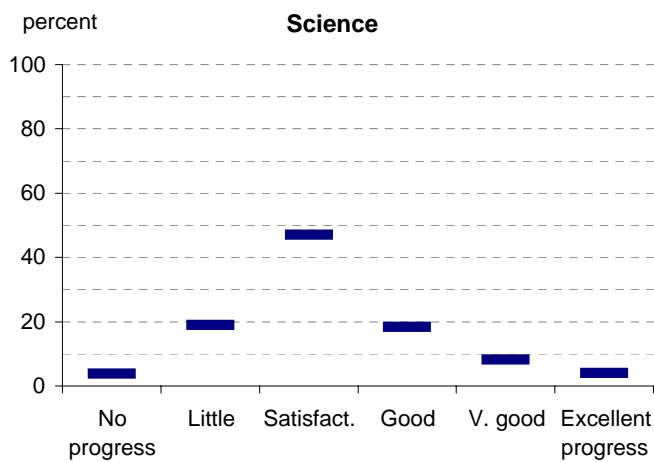
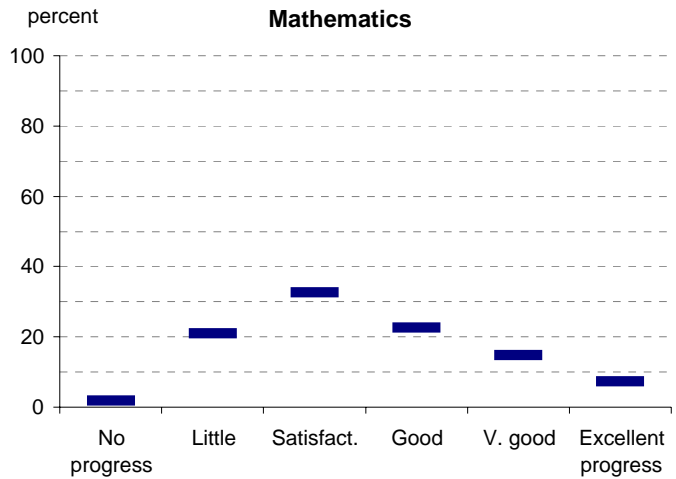
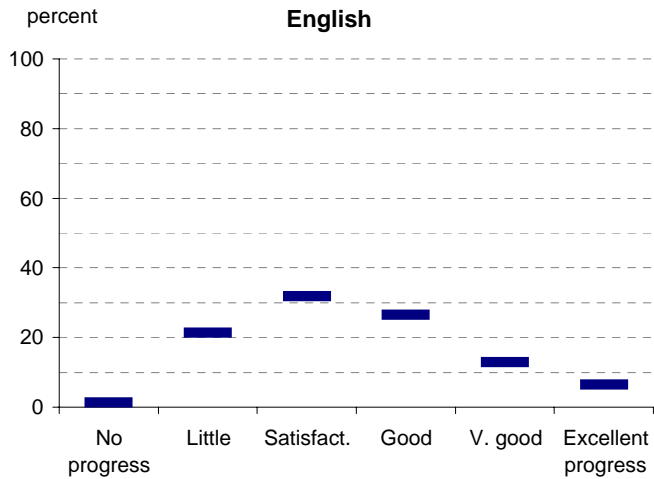
English	1	21	32	26	13	6
Mathematics	2	21	33	23	15	7
Science	4	19	47	18	8	4
ICT	1	17	43	17	14	8
The Arts	2	14	44	24	10	5
H&PE	2	15	37	26	15	5
Civics & Citizenship	3	24	34	22	12	5

Notes: ¹ If schools provided percentages only, it is not possible to report the number of students assessed. In these cases, the total percentage (100) will be shown.

* 2008 benchmarks will be calculated in August, when data from all schools has been submitted.

Teacher Assessment of Student Progress (PSD students)

School no: 450
 School name: Fitzroy Primary School



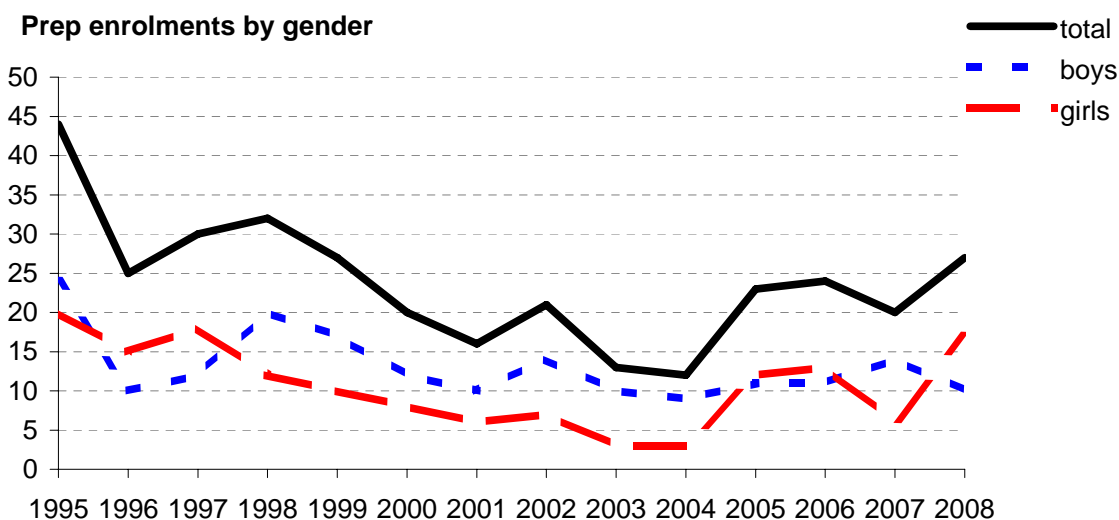
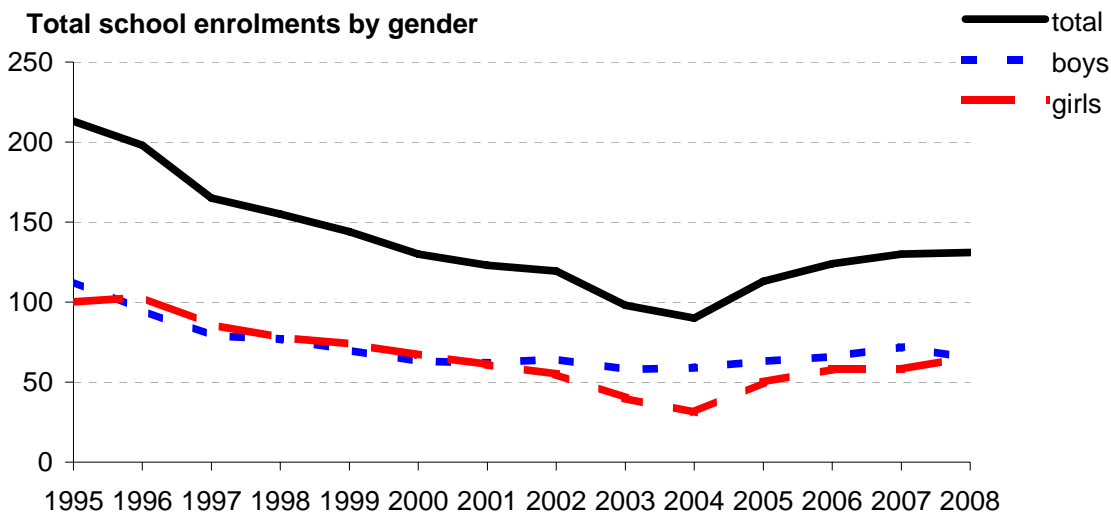
- 2004 (by CSF KLA)
- 2005 (by CSF KLA)
- 2006 (by VELS Domain)
- 2007 (by VELS Domain)
- 2008 (by VELS Domain)
- 2007 Primary state benchmarks (by VELS Domain)*

Notes: * 2008 benchmarks will be calculated in August, when data from all schools has been submitted.

Enrolments

School no: 450
School name: Fitzroy Primary School
Explanation: Enrolments at February census.
Source of data: February census.

Year	Total school enrolment			Prep enrolment			Year 7 enrolments		
	boys	girls	total	boys	girls	total	boys	girls	total
1995	113	100	213	24	20	44			
1996	95	103	198	10	15	25			
1997	79	86	165	12	18	30			
1998	77	78	155	20	12	32			
1999	70	74	144	17	10	27			
2000	63	67	130	12	8	20			
2001	62	61	123	10	6	16			
2002	64	55	119	14	7	21			
2003	58	40	98	10	3	13			
2004	59	31	90	9	3	12			
2005	63	50	113	11	12	23			
2006	66	58	124	11	13	24			
2007	72	58	130	14	6	20			
2008	65	66	131	10	17	27			



Student Absence

School no: 450

School name: Fitzroy Primary School

Source of data: Data retrieved electronically from CASES21.

Explanation: The average (mean) number of absent days† per FTE** student.

Note that 20 absent days equates to 1 absent day per fortnight, and 10 absent days to 1 absent day per month.

	School						2007 state benchmark^		
	2006		2007		2008		25th ptile	Mean	75th ptile
	Enrolments	Avg absent days / FTE** student	Enrolments	Avg absent days / FTE** student	Enrolments	Avg absent days / FTE** student			
Prep	24.0	14.5	20.0	17	27.0	15	12.0	14.6	17.7
Yr 1	20.0	11.2	22.0	15.4	24.0	13	11.5	13.8	16.1
Yr 2	17.0	9.9	19.0	21.9	18.0	21.9	11.0	13.1	15.1
Yr 3	16.0	11.1	14.0	12.5	18.0	12.5	10.8	12.9	14.9
Yr 4	18.0	15.2	15.0	17	11.0	17	10.8	12.9	15.0
Yr 5	17.0	11.8	21.0	16	18.0	16	10.6	13.1	15.0
Yr 6	12.0	8.4	19.0	12.5	15.0	12.5	11.0	13.4	15.7
Ungraded								14.6	
P-6 mean		12		16.1		15.3		13.4	

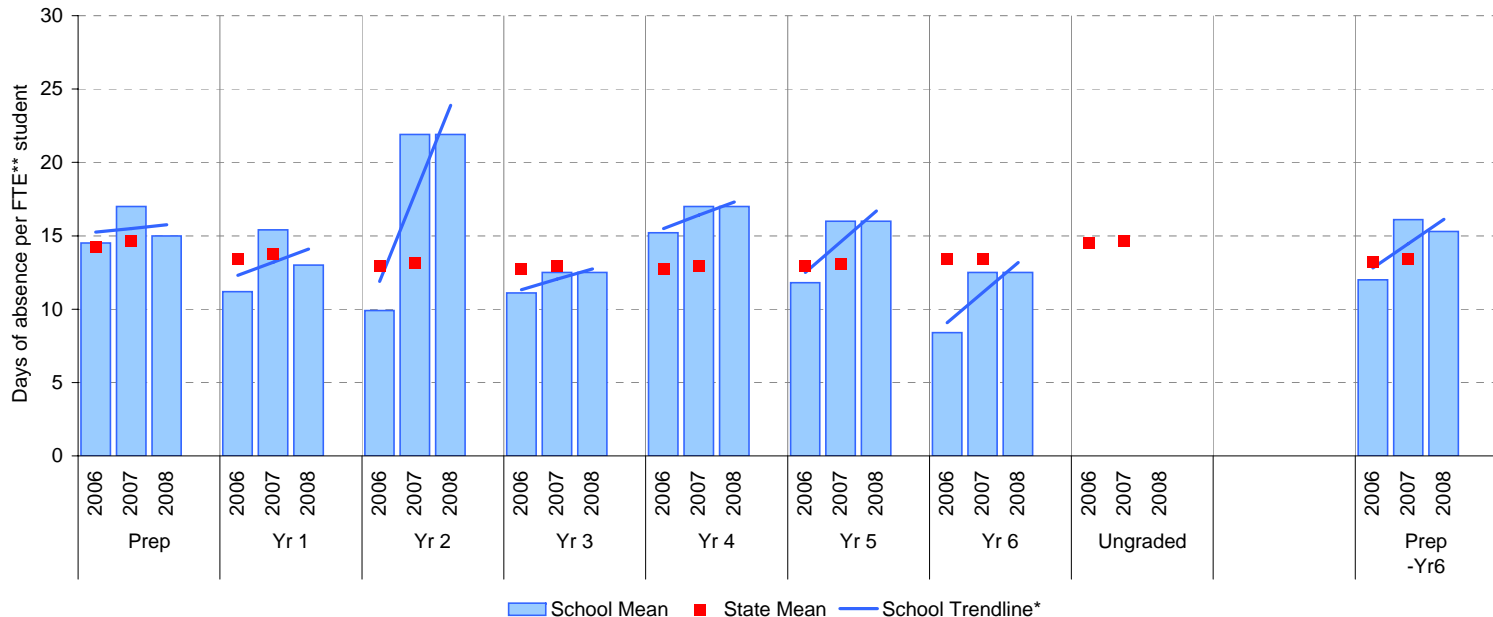
Notes: † Includes non-curriculum absences only (absence codes 200, 201, 202, 203, 205, 206, 207, 208, 209, 210, 211, 300, 401, 500, 700, 800, 804, 805, 900).

* The school trendline is only plotted when there is data for each calendar year.

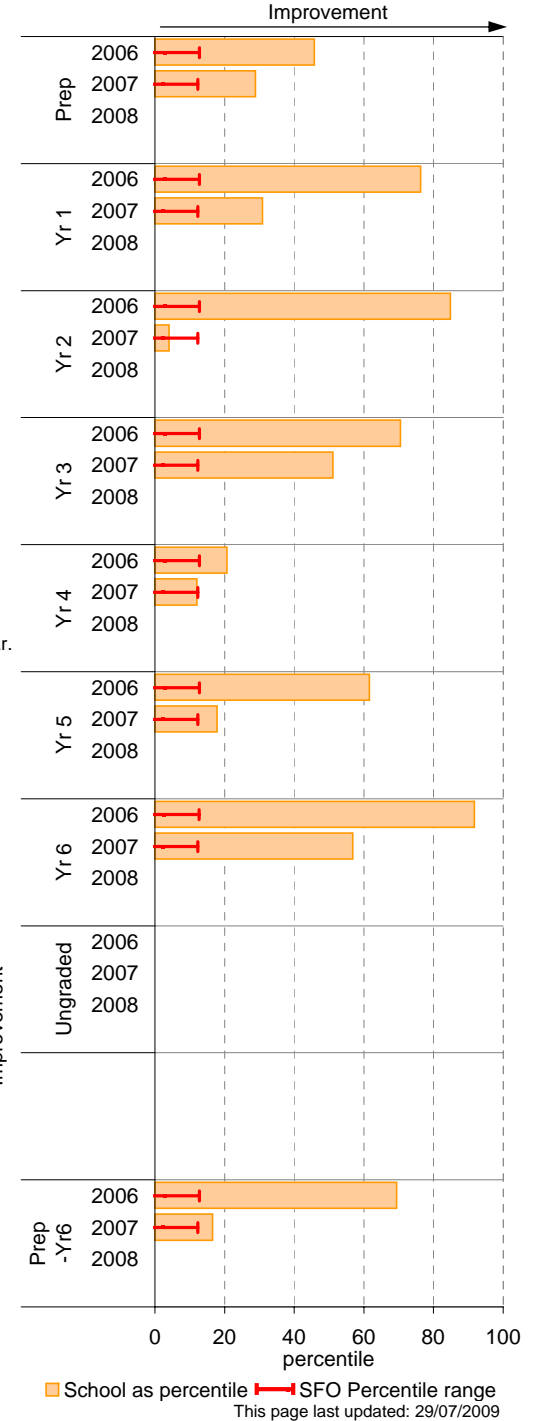
** FTE = Full Time Equivalent (including part-time and part-year fractions).

^ 2008 benchmarks and percentiles will be calculated in August, when data from all schools has been submitted.

School Mean against State Mean^



School Mean as percentile against SFO percentile range^



Parent Opinion

School no: 450

School name: Fitzroy Primary School

Explanation: A self-completion questionnaire to obtain parents' opinions of the school. Parents rated a number of statements using a scale where 1=strongly disagree & 7=strongly agree. The statements were grouped into the following categories.

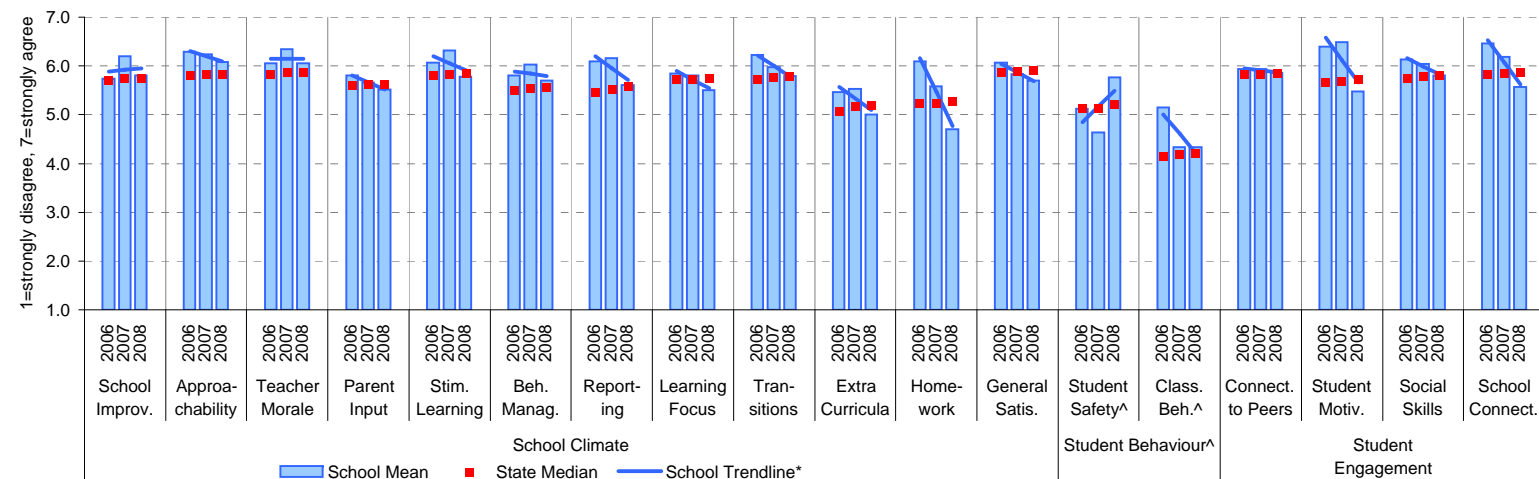
Source of data: Data scanned from questionnaires completed by parents.

Variable No.	Name	Year	School mean	State Primary median
1	School Improvement	2006	5.74	5.71
		2007	6.20	5.75
		2008	5.81	5.74
2	Approachability	2006	6.29	5.81
		2007	6.24	5.82
		2008	6.08	5.83
3	Teacher Morale	2006	6.06	5.82
		2007	6.34	5.86
		2008	6.05	5.85
4	Parent Input	2006	5.81	5.59
		2007	5.66	5.62
		2008	5.52	5.62
5	Stimulating Learning	2006	6.07	5.81
		2007	6.31	5.84
		2008	5.78	5.84
6	Behaviour Management	2006	5.80	5.51
		2007	6.02	5.54
		2008	5.70	5.55
7	Reporting	2006	6.09	5.45
		2007	6.16	5.51
		2008	5.61	5.56

Variable No.	Name	Year	School mean	State Primary median
8	Learning Focus	2006	5.85	5.71
		2007	5.81	5.72
		2008	5.50	5.73
9	Transitions	2006	6.22	5.72
		2007	5.97	5.76
		2008	5.79	5.79
10	Extra Curricula	2006	5.47	5.07
		2007	5.53	5.17
		2008	5.00	5.19
11	Homework	2006	6.10	5.23
		2007	5.58	5.23
		2008	4.71	5.28
12	General Satisfaction	2006	6.07	5.87
		2007	5.83	5.88
		2008	5.71	5.91
13	Student Safety^	2006	5.12	5.13
		2007	4.63	5.12
		2008	5.76	5.20
14	Classroom Behaviour^	2006	5.14	4.15
		2007	4.34	4.18
		2008	4.33	4.20

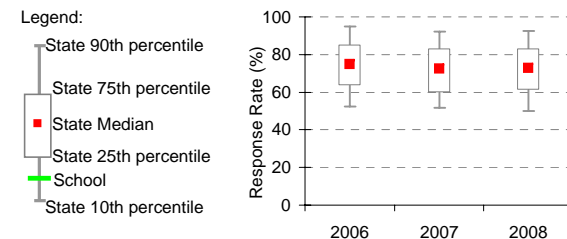
Variable No.	Name	Year	School mean	State Primary median
15	Connectedness to Peers	2006	5.93	5.83
		2007	5.94	5.83
		2008	5.86	5.85
16	Student Motivation	2006	6.40	5.66
		2007	6.49	5.69
		2008	5.47	5.72
17	Social Skills	2006	6.13	5.76
		2007	6.04	5.78
		2008	5.80	5.81
18	School Connectedness	2006	6.47	5.83
		2007	6.18	5.85
		2008	5.56	5.86

School Mean against Primary State Mean



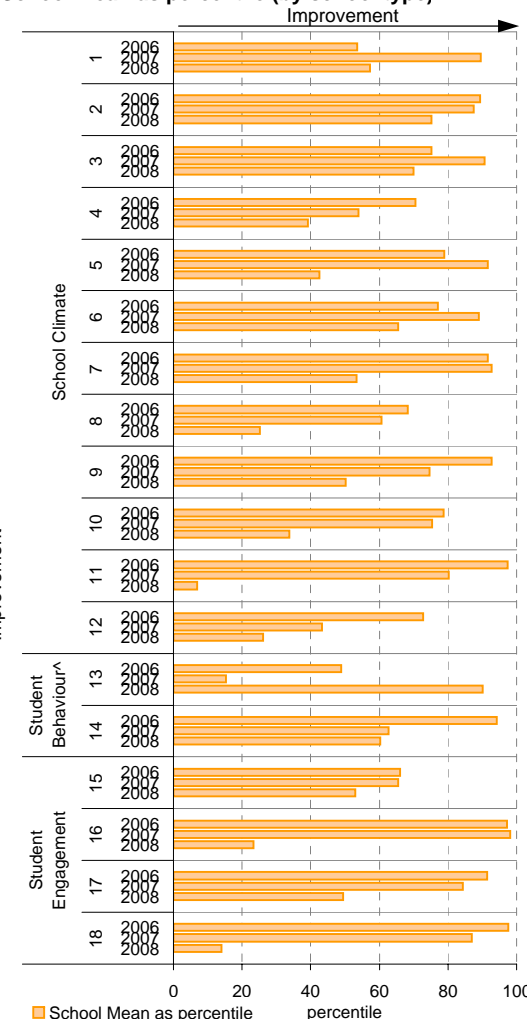
Notes: * The school trendline is plotted when there is data for each calendar year. ^^ Benchmarks available for Primary, Secondary, Pri/Sec, Special and SDS schools.
 ** If there were 6 or less respondents, table data is not shown for confidentiality reasons. If there were 3 or less respondents, graph data is not shown for confidentiality reasons.
 ^ Parents' responses to all negatively phrased questions have been reversed for reporting purposes. Across all variables, the higher the score or percentile rank, the more positive parents' perceptions.
 Produced by Data, Outcomes and Evaluation Division, DEECD

School response rate** against Primary school distribution



Year	No. of respondents	No. invited	Response Rate
2006	15		N/A
2007	31		N/A
2008	15		N/A

School Mean as percentile (by school type)



Legend: School Mean as percentile

percentile

This page last updated: 29/07/2009

Staff Opinion

School no: 450

School name: Fitzroy Primary School

Explanation: A self-completion questionnaire to obtain the staff's opinions of the school. The survey was administered online using the School Organisational Health Questionnaire.

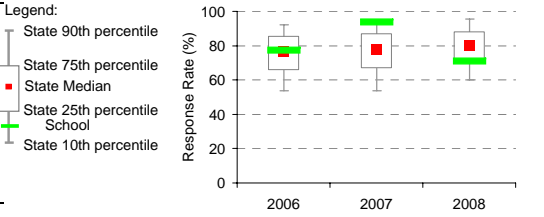
Source of data: Data transmitted from school staff to DEECD via an online survey application.

Variable No.	Name	Year	School mean	State Primary median
1	Individual Morale	2006	76.3	75.6
		2007	80.7	76.8
		2008	77.3	78.1
2	School Morale	2006	73.2	78.1
		2007	80.3	79.2
		2008	79.7	80.8
3	Supportive Leadership	2006	77.4	80.0
		2007	89.0	80.6
		2008	83.2	82.2
4	Role Clarity	2006	73.5	79.6
		2007	85.0	80.1
		2008	81.6	81.3
5	Professional Interaction	2006	76.7	80.7
		2007	84.3	81.9
		2008	85.3	83.2
6	Participative Decision-Making	2006	71.3	75.1
		2007	78.3	76.3
		2008	73.9	77.4
7	Goal Congruence	2006	71.1	81.7
		2007	82.0	82.6
		2008	80.3	83.7

Variable No.	Name	Year	School mean	State Primary median
8	Appraisal & Recognition	2006	71.0	71.6
		2007	80.3	73.1
		2008	75.0	75.0
9	Professional Growth	2006	78.0	74.2
		2007	81.0	76.0
		2008	80.6	76.9
10	Curriculum Coordination	2006	67.7	75.0
		2007	74.0	75.6
		2008	77.1	77.9
11	Effective Discipline Policy	2006	68.2	79.9
		2007	82.8	80.9
		2008	75.5	82.0
12	Student Orientation	2006	88.9	86.1
		2007	90.3	86.6
		2008	91.0	87.5
13	Student Motivation	2006	62.9	76.8
		2007	61.7	77.9
		2008	69.2	79.5
14	Student Decision-Making	2006	63.8	69.4
		2007	60.8	71.3
		2008	70.4	72.9

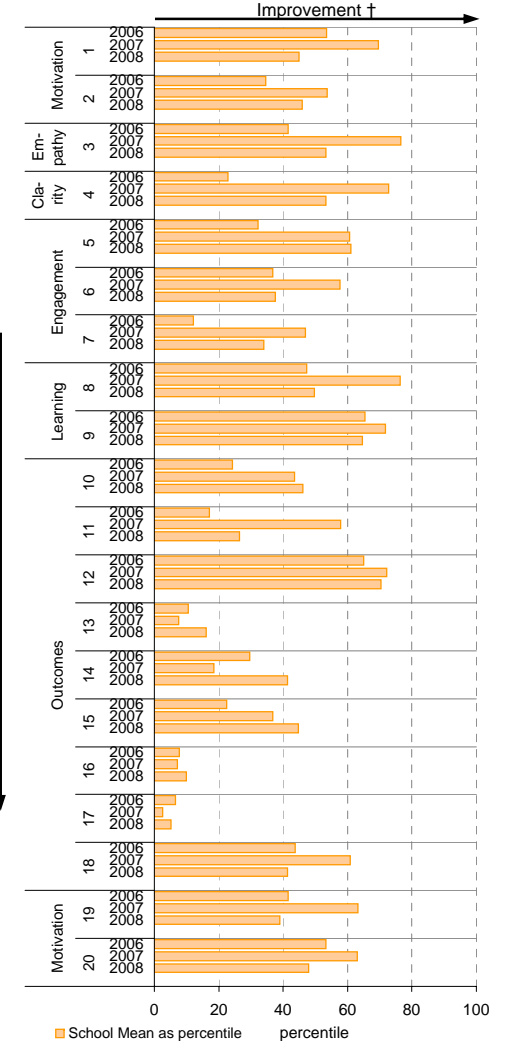
Variable No.	Name	Year	School mean	State Primary median
15	Learning Environment	2006	74.0	81.3
		2007	79.7	82.5
		2008	83.3	84.1
16	Student Misbehaviour	2006	49.3	21.7
		2007	47.9	21.5
		2008	43.8	20.0
17	Classroom Misbehaviour	2006	27.5	13.8
		2007	31.8	13.3
		2008	26.4	12.6
18	Excessive Work Demands	2006	45.6	42.9
		2007	38.8	43.2
		2008	44.8	41.7
19	Individual Distress	2006	23.1	21.6
		2007	18.2	21.1
		2008	22.0	20.0
20	School Distress	2006	27.9	28.8
		2007	23.3	28.3
		2008	27.6	26.7

School response rate** against Primary school distribution

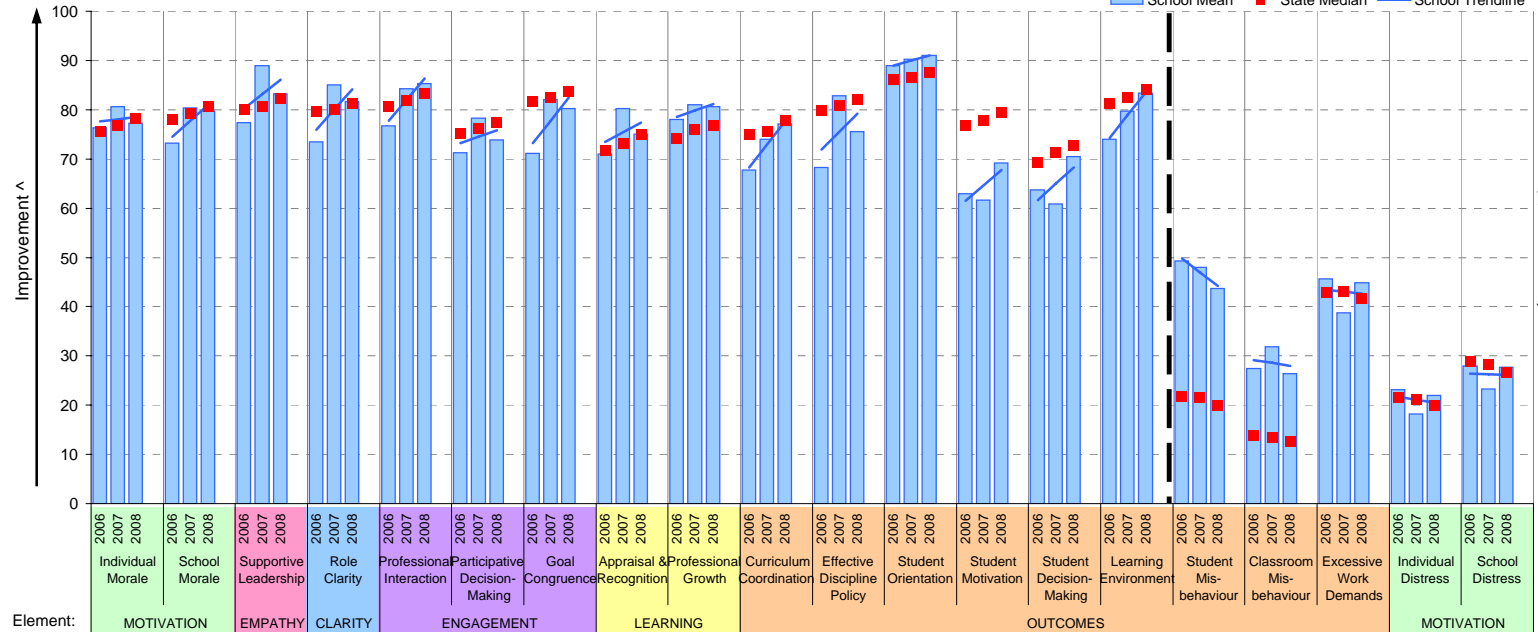


Year	No. of respondents	No. invited	Response Rate
2006	17	22	77%
2007	15	16	94%
2008	17	24	71%

School Mean as percentile (by school type)



School Mean against Primary State Median



Notes: * The school trendline is being trialled. It is only plotted when there is data for each calendar year.

** If there were 6 or less respondents, table data is not shown for confidentiality reasons. If there were 3 or less respondents, graph data is not shown for confidentiality reasons.

^ The higher the school mean, the more positive the outcome for variables 1 to 15. The lower the school mean, the more positive the outcome for variables 16 to 20.

† The higher the school percentile, the more positive the outcome for all variables.

^^ Benchmarks are available for Primary, Secondary, Pri/Sec, Special & SDS schools.

Performance & Development Culture (P&DC)^{††}

NEW

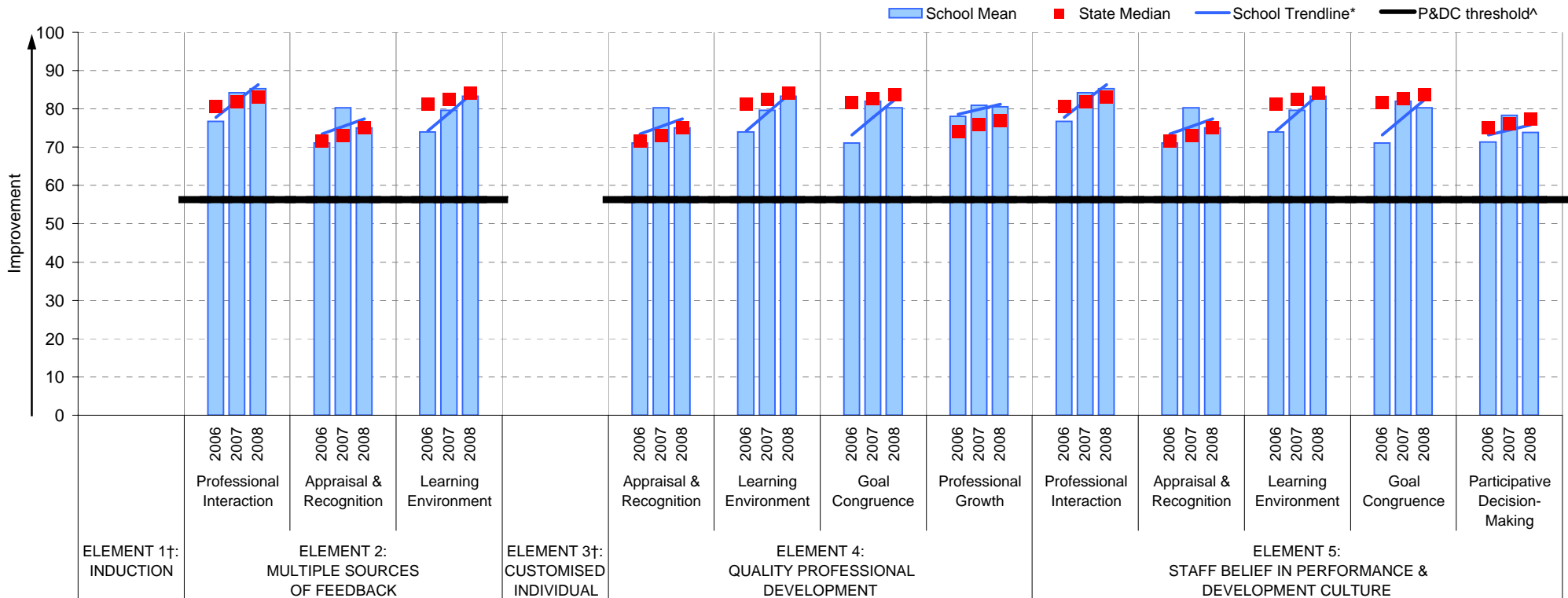
School no: 450

School name: Fitzroy Primary School

Explanation: The data on this page refers to the Staff Opinion Survey.

Source of data: Data transmitted from school staff to DEECD via an online survey application.

School Mean against Primary State Median



Notes:

†† An assessment of the correlation between the P&DC Questionnaire and the Staff Opinion Survey was undertaken using data from Victorian Government schools that completed both surveys 2005 to 2007 (ie. 699 schools). This led to the identification of the components of the Staff Opinion Survey that could be used to assist schools with the ongoing monitoring of their perform and development culture. Refer to the P&DC website for further information: <http://www.education.vic.gov.au/management/schoolimprovement/panddc/default.htm>. For numerical r relating to the above graph, refer to the Staff Opinion Survey page in this rep

† Note that there is no significant correlation between the Staff Opinion Survey and P&DC elements 1 (Induction) and 3 (Customised Individual Development Plc

^ The P&DC threshold was derived from the P&DC Questionnaire 'percent favourable' methodology where a school is considered at the standard of accreditation when their Element score is : favourable (ie. at least 75% of staff selected the top two response categories in the P&DC Questionnai

* The school trendline is only plotted when there is data for each calendar ye.

** If there were 3 or less respondents, graph data is not shown for confidentiality reason

^^ Benchmarks are available for Primary, Secondary, Pri/Sec, Special & SDS school

Staff Sick Leave

School no: 450

School name: Fitzroy Primary School

Explanation: The number of non-certificated and total sick leave days taken per staff member. A detailed explanation on how staff sick leave is calculated is provided at: education.vic.gov.au/management/schoolimprovement/performance/performancefaq.htm.

Source of data: Human Resources Management System (HRMS)^.

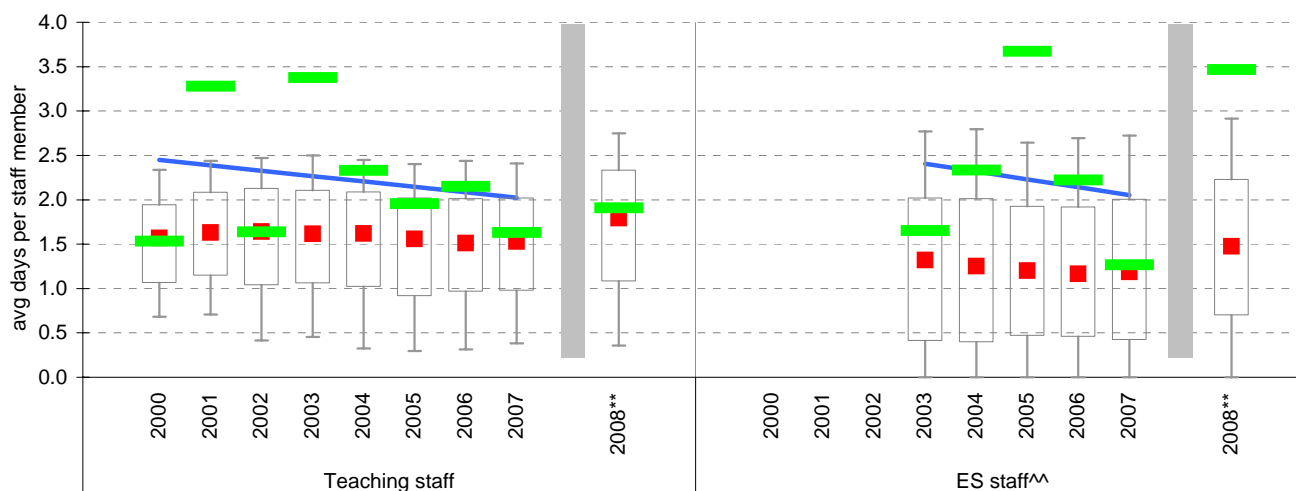
Non-Certificated sick leave days per staff member^

Staff Type	2000	2001	2002	2003	2004	2005	2006	2007	2008**	2008 State Median**
Teacher	1.53	3.28	1.64	3.38	2.33	1.95	2.15	1.63	1.91	1.79
ES^^					2.33	3.67	2.22	1.27	3.47	1.47

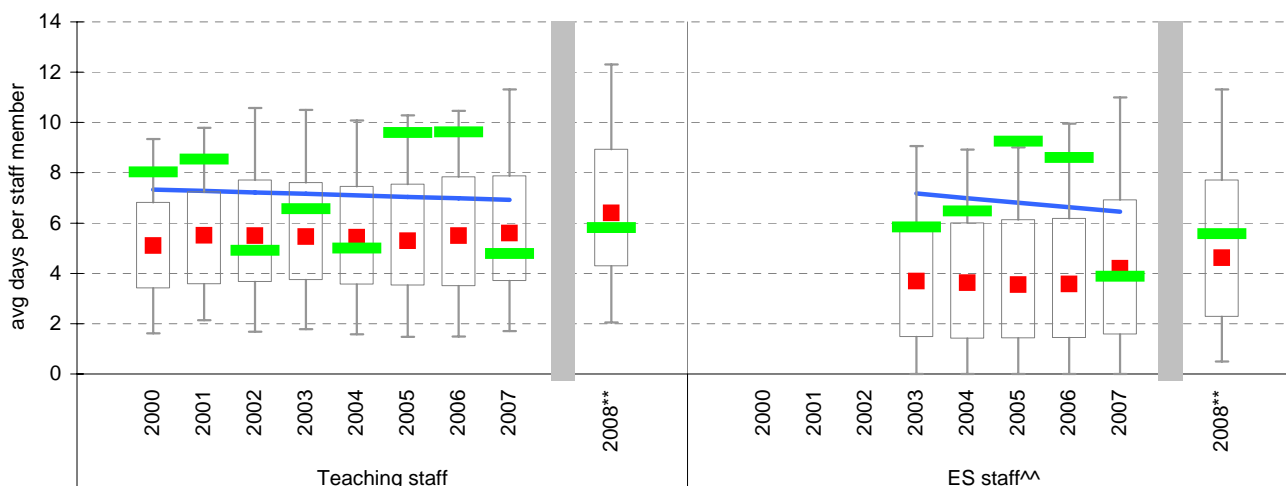
Total sick leave days per staff member^

Staff Type	2000	2001	2002	2003	2004	2005	2006	2007	2008**	2008 State Median**
Teacher	8.03	8.54	4.91	6.56	5.00	9.60	9.62	4.78	5.81	6.40
ES^^					6.48	9.25	8.60	3.88	5.57	4.63

NON-CERTIFICATED sick leave

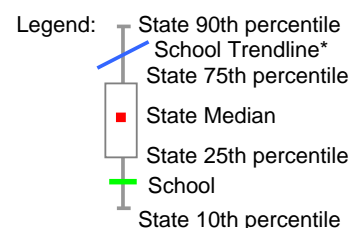


TOTAL sick leave



Notes:

- * The school trendline is only plotted when there is data for each calendar year.
- ** The way in which sick leave data are calculated changed in 2008. As such, data from 2008 cannot be compared with previous years.
- ^ There may be some discrepancy between the results from CASES21 and those from HRMS. The latter are considered to be more accurate.
- ^^ Data for ES (Education Support) staff is only available from 2003. In previous versions of this report, ES staff were known as SSO staff.



Teaching Staff Retention

School no: 450

School name: Fitzroy Primary School

Explanation: The retention rate of teaching staff is determined by matching staff payroll records for the last pay in June of one year (Year A), to the last pay in June of the following year (Year B).

Source of data: Human Resources Management System (HRMS).

Teaching Staff*

Year A	Year B	Number of Teaching Staff in Year A	Number of Teaching Staff retained in Year B	Teaching Staff Retention Rate	Statewide Average
2005	2006	12	11	92%	87%
2006	2007	13	10	77%	86%
2007	2008	13	12	92%	84%

Of the 12 teaching service staff at June 2005 (including those on leave without pay), 11 or 92% were still at the school at June 2006. This figure across all Government schools was 87%.

Of the 13 teaching service staff at June 2006 (including those on leave without pay), 10 or 77% were still at the school at June 2007. This figure across all Government schools was 86%.

Of the 13 teaching service staff at June 2007 (including those on leave without pay), 12 or 92% were still at the school at June 2008. This figure across all Government schools was 84%.

Ongoing Teaching Staff**

Year A	Year B	Number of Ongoing Teaching Staff in Year A	Number of Ongoing Teaching Staff retained in Year B	Ongoing Teaching Staff Retention Rate	Statewide Average
2005	2006	8	8	100%	91%
2006	2007	9	8	89%	90%
2007	2008	11	10	91%	88%

Of the 8 ongoing teaching service staff at June 2005 (including those on leave without pay), 8 or 100% were still at the school at June 2006. This figure across all Government schools was 91%.

Of the 9 ongoing teaching service staff at June 2006 (including those on leave without pay), 8 or 89% were still at the school at June 2007. This figure across all Government schools was 90%.

Of the 11 ongoing teaching service staff at June 2007 (including those on leave without pay), 10 or 91% were still at the school at June 2008. This figure across all Government schools was 88%.

Notes: * Teaching staff includes Principal class, Teacher class and Instructor class. Teaching staff employed as visiting teachers, guidance officers, curriculum consultants, etc. are excluded as they are not charged to a particular school.

^ Not including fixed term staff, except for where staff had changed from ongoing in Year A to fixed term in Year B.

Bank Balances

School no: 450

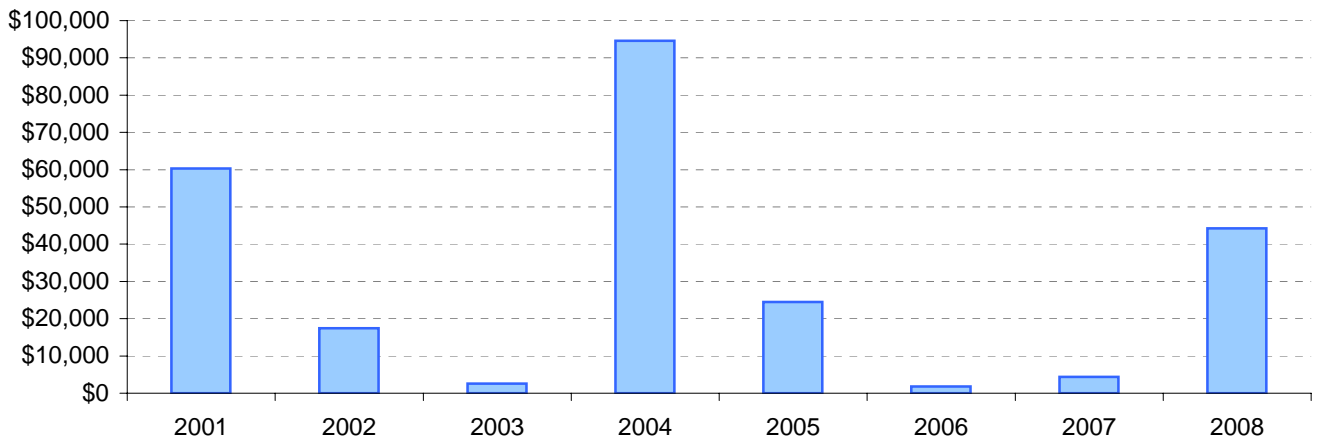
School name: Fitzroy Primary School

Explanation: Account balance figures include official and investment accounts, and are calculated by taking the opening balance at 1st January plus the total receipts at 31st December less total payments at 31st December.

Account Balances (Official plus Investment Accounts)

2001	\$60,321	2005	\$24,517
2002	\$17,456	2006	\$1,770
2003	\$2,553	2007	\$4,406
2004	\$94,608	2008	\$44,220

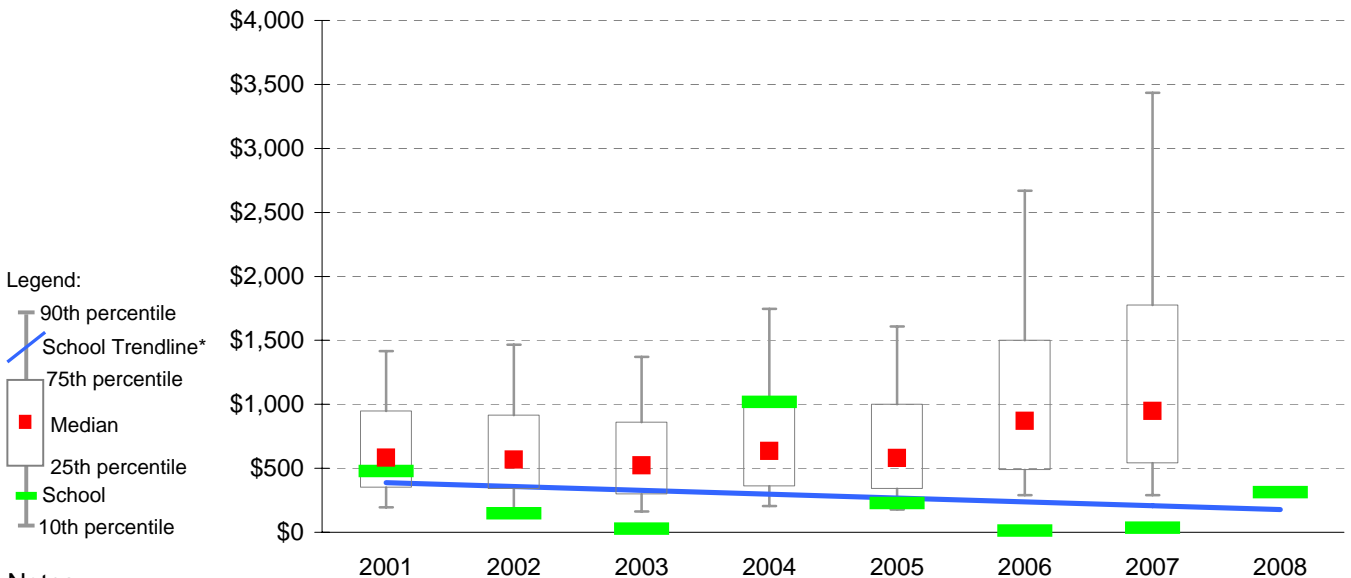
Account Balances



Account Balances (Official plus Investment Accounts) per student[†]

2001	\$479	2005	\$227
2002	\$147	2006	\$13
2003	\$27	2007	\$36
2004	\$1,017	2008	\$314

School account balances per student enrolled in August census plotted on state Primary benchmarks[^]



Notes:

* The school trendline is being trialled. It is only plotted when there is data for each calendar year.

† The account balance per student has been calculated to enable some comparison to be made between schools.

^ Benchmarks for primary, secondary, pri/sec, SDS, special and language schools.